

## Aldose Reductase Monoclonal Antibody

### Description

<b>Product type</b>	Primary Antibody
<b>Code</b>	BT-MCA0151
<b>Host</b>	Mouse
<b>Isotype</b>	IgG
<b>Size</b>	50ul, 100ul
<b>Immunogen</b>	Purified recombinant human Aldose Reductase protein fragments expressed in E.coli.
<b>Mol wt</b>	N/A
<b>Species reactivity</b>	Human,Mouse,Dog,Rabbit
<b>Clonality</b>	Monoclonal
<b>Recommended application</b>	WB
<b>Concentration</b>	1 mg/ml
<b>Full name</b>	Aldose reductase
<b>Synonyms</b>	AKR1B1; ALDR1; Aldose reductase; AR; Aldehyde reductase; Aldo-keto reductase family 1 member B1

This product is for research use only, not for use in human, therapeutic or diagnostic procedure.

### Background

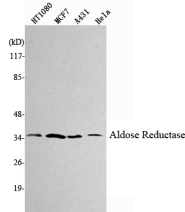
This gene encodes a member of the aldo/keto reductase superfamily, which consists of more than 40 known enzymes and proteins. This member catalyzes the reduction of a number of aldehydes, including the aldehyde form of glucose, and is thereby implicated in the development of diabetic complications by catalyzing the reduction of glucose to sorbitol. Multiple pseudogenes have been identified for this gene. The nomenclature system used by the HUGO Gene Nomenclature Committee to define human aldo-keto reductase family members is known to differ from that used by the Mouse Genome Informatics database.

### Recommended Dilution

WB: 1:1000 - 1:2000

Not yet tested in other applications.

### Images



Western Blot analysis using Aldose Reductase Monoclonal antibody against HT1080, MCF7, A431. HeLa cell lysate.

### Storage

-20°C for one year