

## AMPK Alpha1 Monoclonal Antibody(5G11)

### Description

<b>Product type</b>	Primary Antibody
<b>Code</b>	BT-MCA0155
<b>Host</b>	Mouse
<b>Isotype</b>	IgG
<b>Size</b>	20ul, 50ul, 100ul
<b>Immunogen</b>	Synthetic Peptide of AMPK $\alpha$ 1
<b>Mol wt</b>	N/A
<b>Species reactivity</b>	Human,Rat,Mouse
<b>Clonality</b>	Monoclonal
<b>Recommended application</b>	WB, IHC-p, IF
<b>Concentration</b>	1 mg/ml
<b>Full name</b>	5'-AMP-activated protein kinase catalytic subunit alpha-1
<b>Synonyms</b>	PRKAA1; AMPK1; 5'-AMP-activated protein kinase catalytic subunit alpha-1; AMPK subunit alpha-1; Acetyl-CoA carboxylase kinase; ACACA kinase; Hydroxymethylglutaryl-CoA reductase kinase; HMGCR kinase; Tau-protein kinase PRKAA1

This product is for research use only, not for use in human, therapeutic or diagnostic procedure.

### Background

The protein encoded by this gene belongs to the ser/thr protein kinase family. It is the catalytic subunit of the 5'-prime-AMP-activated protein kinase (AMPK). AMPK is a cellular energy sensor conserved in all eukaryotic cells. The kinase activity of AMPK is activated by the stimuli that increase the cellular AMP/ATP ratio. AMPK regulates the activities of a number of key metabolic enzymes through phosphorylation. It protects cells from stresses that cause ATP depletion by switching off ATP-consuming biosynthetic pathways. Alternatively spliced transcript variants encoding distinct isoforms have been observed.

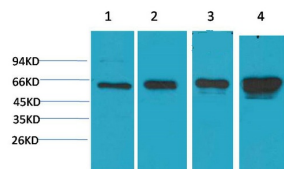
### Recommended Dilution

IHC: 1:50-100

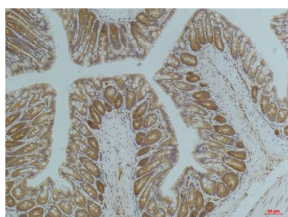
WB: 1:1000-2000

Not yet tested in other applications.

### Images



Western blot analysis of 1)Hela, 2) 293T, 3)3T3. 4) PC12 with AMPK  $\alpha$ 1 Mouse Monoclonal antibody diluted at 1:2.000.



Immunohistochemical analysis of paraffin-embedded Mouse Colon Tissue using AMPK  $\alpha$ 1 Mouse Monoclonal antibody diluted at 1:200.

## Storage

-20°C for one year

501 Changsheng S Rd, Nanhu Dist, Jiaxing, Zhejiang, China

Tel: 86 21 31007137 | E-mail: [save@bt-laboratory.com](mailto:save@bt-laboratory.com) | [www.bt-laboratory.com](http://www.bt-laboratory.com)