

## B23 Monoclonal Antibody

### Description

|                                |   |
|--------------------------------|---|
| <b>Product type</b>            | Primary Antibody  |
| <b>Code</b>                    | BT-MCA0201  |
| <b>Host</b>                    | Mouse   |
| <b>Isotype</b>                 | IgG   |
| <b>Size</b>                    | 50ul, 100ul   |
| <b>Immunogen</b>               | Purified recombinant fragment of human B23 expressed in E. Coli.                              |
| <b>Mol wt</b>                  | N/A   |
| <b>Species reactivity</b>      | Human,Monkey  |
| <b>Clonality</b>               | Monoclonal  |
| <b>Recommended application</b> | WB, IHC-p, IF, ICC, ELISA   |
| <b>Concentration</b>           | 1 mg/ml   |
| <b>Full name</b>               | Nucleophosmin   |
| <b>Synonyms</b>                | NPM1; NPM; Nucleophosmin; NPM; Nucleolar phosphoprotein B23; Nucleolar protein NO38; Numatrin |

**This product is for research use only, not for use in human, therapeutic or diagnostic procedure.**

### Background

This gene encodes a phosphoprotein which moves between the nucleus and the cytoplasm. The gene product is thought to be involved in several processes including regulation of the ARF/p53 pathway. A number of genes are fusion partners have been characterized, in particular the anaplastic lymphoma kinase gene on chromosome 2. Mutations in this gene are associated with acute myeloid leukemia. More than a dozen pseudogenes of this gene have been identified. Alternative splicing results in multiple transcript variants.

### Recommended Dilution

ELISA: 1:10000

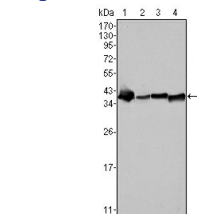
IF: 1:200 - 1:1000

IHC: 1:200 - 1:1000

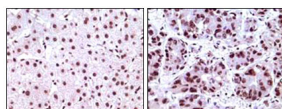
WB: 1:500 - 1:2000

Not yet tested in other applications.

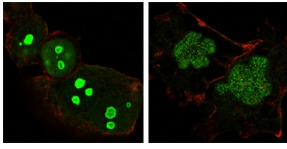
### Images



Western Blot analysis using B23 Monoclonal antibody against SMMC-7721 (1) HepG2 (2) HeLa (3) and HEK293 (4) cell lysate.



Immunohistochemistry analysis of paraffin-embedded human liver carcinoma tissues, showing nuclear localization with DAB staining using B23 Monoclonal antibody.



Confocal immunofluorescence analysis of HeLa (left) and NTERA-2 (right) cells using B23 Monoclonal antibody (green). Red: Actin filaments have been labeled with DY-554 phalloidin.

### Storage

-20°C for one year

501 Changsheng S Rd, Nanhu Dist, Jiaxing, Zhejiang, China

Tel: 86 21 31007137 | E-mail: [save@bt-laboratory.com](mailto:save@bt-laboratory.com) | [www.bt-laboratory.com](http://www.bt-laboratory.com)