

BNP Monoclonal Antibody

Description

Product type	Primary Antibody
Code	BT-MCA0230
Host	Mouse
Isotype	IgG
Size	50ul, 100ul
Immunogen	Synthetic peptide corresponding to aa (Glu-Pro-Leu-Gln-Glu-Ser-Pro-Arg-Pro-Thr-Gly-Val-Trp-Cys) of human BNP, conjugated to KLH.
Mol wt	N/A
Species reactivity	Human
Clonality	Monoclonal
Recommended application	IHC-p, IF, ELISA
Concentration	1 mg/ml
Full name	Natriuretic peptides B
Synonyms	NPPB; Natriuretic peptides B; Gamma-brain natriuretic peptide

This product is for research use only, not for use in human, therapeutic or diagnostic procedure.

Background

This gene is a member of the natriuretic peptide family and encodes a secreted protein which functions as a cardiac hormone. The protein undergoes two cleavage events, one within the cell and a second after secretion into the blood. The protein's biological actions include natriuresis, diuresis, vasorelaxation, inhibition of renin and aldosterone secretion, and a key role in cardiovascular homeostasis. A high concentration of this protein in the bloodstream is indicative of heart failure. The protein also acts as an antimicrobial peptide with antibacterial and antifungal activity. Mutations in this gene have been associated with postmenopausal osteoporosis.

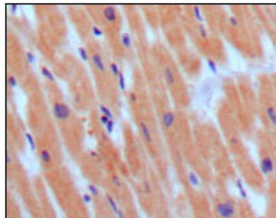
Recommended Dilution

ELISA: 1:10000

IHC: 1:200 - 1:1000

Not yet tested in other applications.

Images



Immunohistochemistry analysis of paraffin-embedded human normal myocardium, showing cytoplasmic localization with DAB staining using BNP Monoclonal antibody.

Storage

-20°C for one year