

## C/EBP Beta Monoclonal Antibody

### Description

<b>Product type</b>	Primary Antibody
<b>Code</b>	BT-MCA0246
<b>Host</b>	Mouse
<b>Isotype</b>	IgG
<b>Size</b>	50ul, 100ul
<b>Immunogen</b>	Purified recombinant fragment of human C/EBP Beta expressed in E. Coli.
<b>Mol wt</b>	N/A
<b>Species reactivity</b>	Human
<b>Clonality</b>	Monoclonal
<b>Recommended application</b>	WB, FCM, ELISA
<b>Concentration</b>	1 mg/ml
<b>Full name</b>	CCAAT,enhancer-binding protein beta
<b>Synonyms</b>	CEBPB; LAP; TCF5; PP9092; CCAAT; enhancer-binding protein beta; C; EBP beta; Liver activator protein; Nuclear factor NF-IL6; Transcription factor 5; TCF-5

**This product is for research use only, not for use in human, therapeutic or diagnostic procedure.**

### Background

This intronless gene encodes a transcription factor that contains a basic leucine zipper (bZIP) domain. The encoded protein functions as a homodimer but can also form heterodimers with CCAAT/enhancer-binding proteins alpha, delta, and gamma. Activity of this protein is important in the regulation of genes involved in immune and inflammatory responses, among other processes. The use of alternative in-frame AUG start codons results in multiple protein isoforms, each with distinct biological functions.

### Recommended Dilution

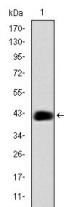
ELISA: 1:10000

FC: 1:200 - 1:400

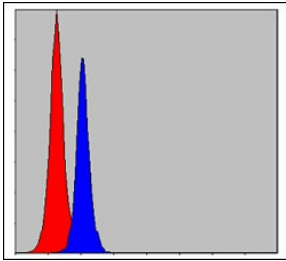
WB: 1:500 - 1:2000

Not yet tested in other applications.

### Images



Western Blot analysis using C/EBP Beta Monoclonal antibody against human C/EBP Beta (AA: 161-338) recombinant protein.



Flow cytometric analysis of MCF-7 cells using C/EBP Beta Monoclonal antibody (blue) and negative control (red).

### Storage

-20°C for one year

501 Changsheng S Rd, Nanhu Dist, Jiaxing, Zhejiang, China

Tel: 86 21 31007137 | E-mail: [save@bt-laboratory.com](mailto:save@bt-laboratory.com) | [www.bt-laboratory.com](http://www.bt-laboratory.com)