

Calnexin Monoclonal Antibody

Description

Product type	Primary Antibody
Code	BT-MCA0250
Host	Mouse
Isotype	IgG
Size	50ul, 100ul
Immunogen	Synthetic peptide corresponding to aa (CEAAEERPWLWVVYILTVALL) of human Calnexin, conjugated to KLH.
Mol wt	N/A
Species reactivity	Human
Clonality	Monoclonal
Recommended application	WB, IF, ICC, ELISA
Concentration	1 mg/ml
Full name	Calnexin
Synonyms	CANX; Calnexin; IP90; Major histocompatibility complex class I antigen-binding protein p88; p90

This product is for research use only, not for use in human, therapeutic or diagnostic procedure.

Background

This gene encodes a member of the calnexin family of molecular chaperones. The encoded protein is a calcium-binding, endoplasmic reticulum (ER)-associated protein that interacts transiently with newly synthesized N-linked glycoproteins, facilitating protein folding and assembly. It may also play a central role in the quality control of protein folding by retaining incorrectly folded protein subunits within the ER for degradation. Alternatively spliced transcript variants encoding the same protein have been described.

Recommended Dilution

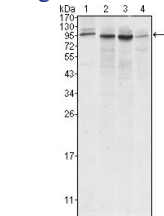
ELISA: 1:10000

IF: 1:200 - 1:1000

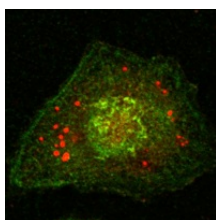
WB: 1:500 - 1:2000

Not yet tested in other applications.

Images



Western Blot analysis using Calnexin Monoclonal antibody against A431 (1) HeLa (2) MCF-7 (3) and A549 (4) cell lysate.



Confocal immunofluorescence analysis of HeLa cells using Calnexin Monoclonal antibody (green).

Storage

-20°C for one year

501 Changsheng S Rd, Nanhu Dist, Jiaxing, Zhejiang, China

Tel: 86 21 31007137 | E-mail: save@bt-laboratory.com | www.bt-laboratory.com