

## CaMKII Beta/Gamma/Delta (Phospho Thr287) Monoclonal Antibody(4H2)

### Description

Product type	Primary Antibody
Code	BT-MCA0253
Host	Mouse
Isotype	IgG
Size	20ul, 50ul, 100ul
Immunogen	Synthetic Peptide of CaMKIIBeta/ $\gamma$ / $\delta$ (Phospho Thr287)
Mol wt	N/A
Species reactivity	Human,Rat,Mouse
Clonality	Monoclonal
Recommended application	IHC-p, IF
Concentration	1 mg/ml
Full name	N/A
Synonyms	CAMK2B; CAM2; CAMK2; CAMKB; Calcium; calmodulin-dependent protein kinase type II subunit beta; CaM kinase II subunit beta; CaMK-II subunit beta; CAMK2G; CAMK; CAMK-II; CAMKG; Calcium; calmodulin-dependent protein kinase type II subunit gamma;

**This product is for research use only, not for use in human, therapeutic or diagnostic procedure.**

### Background

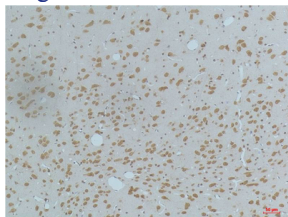
The product of this gene belongs to the serine/threonine protein kinase family and to the Ca(2+)/calmodulin-dependent protein kinase subfamily. Calcium signaling is crucial for several aspects of plasticity at glutamatergic synapses. In mammalian cells, the enzyme is composed of four different chains: alpha, beta, gamma, and delta. The product of this gene is a beta chain. It is possible that distinct isoforms of this chain have different cellular localizations and interact differently with calmodulin. Alternative splicing results in multiple transcript variants.

### Recommended Dilution

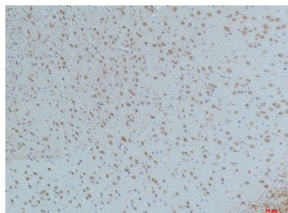
IHC: 1:100-200

Not yet tested in other applications.

### Images



Immunohistochemical analysis of paraffin-embedded Rat Brain Tissue using CaMKIIBeta/ Gamma / $\delta$  (Phospho Thr287) (Monoclonal antibody diluted at 1:200).



Immunohistochemical analysis of paraffin-embedded Mouse Brain Tissue using CaMKIIBeta/ Gamma / $\delta$  (Phospho Thr287) Mouse Monoclonal antibody diluted at 1:200.

## Storage

-20°C for one year

501 Changsheng S Rd, Nanhu Dist, Jiaxing, Zhejiang, China

Tel: 86 21 31007137 | E-mail: [save@bt-laboratory.com](mailto:save@bt-laboratory.com) | [www.bt-laboratory.com](http://www.bt-laboratory.com)