

CD38 Monoclonal Antibody

Description

Product type	Primary Antibody
Code	BT-MCA0300
Host	Mouse
Isotype	IgG
Size	50ul, 100ul
Immunogen	Purified recombinant fragment of human CD38 expressed in E. Coli.
Mol wt	N/A
Species reactivity	Human
Clonality	Monoclonal
Recommended application	WB, IHC-p, IF, ELISA
Concentration	1 mg/ml
Full name	ADP-ribosyl cyclase 1
Synonyms	CD38; ADP-ribosyl cyclase 1; Cyclic ADP-ribose hydrolase 1; cADPr hydrolase 1; T10; CD antigen CD38

This product is for research use only, not for use in human, therapeutic or diagnostic procedure.

Background

The protein encoded by this gene is a non-lineage-restricted, type II transmembrane glycoprotein that synthesizes and hydrolyzes cyclic adenosine 5'-diphosphate-ribose, an intracellular calcium ion mobilizing messenger. The release of soluble protein and the ability of membrane-bound protein to become internalized indicate both extracellular and intracellular functions for the protein. This protein has an N-terminal cytoplasmic tail, a single membrane-spanning domain, and a C-terminal extracellular region with four N-glycosylation sites. Crystal structure analysis demonstrates that the functional molecule is a dimer, with the central portion containing the catalytic site. It is used as a prognostic marker for patients with chronic lymphocytic leukemia. Alternative splicing results in multiple transcript variants.

Recommended Dilution

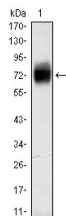
ELISA: 1:10000

IHC: 1:200 - 1:1000

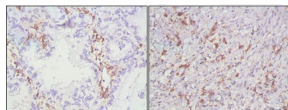
WB: 1:500 - 1:2000

Not yet tested in other applications.

Images



Western Blot analysis using CD38 Monoclonal antibody against CD38-hIgGFc transfected HEK293 cell lysate.



Immunohistochemistry analysis of paraffin-embedded human lung cancer (A), lymphonodus tissue (B), showing cytomembrane localization with DAB staining using CD38 Monoclonal antibody.

Storage

-20°C for one year

501 Changsheng S Rd, Nanhu Dist, Jiaxing, Zhejiang, China
Tel: 86 21 31007137 | E-mail: save@bt-laboratory.com | www.bt-laboratory.com