

CDC2 Monoclonal Antibody

Description

| | |
|--------------------------------|--|
| Product type | Primary Antibody |
| Code | BT-MCA0323 |
| Host | Mouse |
| Isotype | IgG |
| Size | 50ul, 100ul |
| Immunogen | Purified recombinant fragment of CDC2 expressed in E. Coli. |
| Mol wt | N/A |
| Species reactivity | Human |
| Clonality | Monoclonal |
| Recommended application | WB, IF, ICC, FCM, ELISA |
| Concentration | 1 mg/ml |
| Full name | Cell division protein kinase 1 |
| Synonyms | CDK1; CDC2; CDC28A; CDKN1; P34CDC2; Cyclin-dependent kinase 1; CDK1; Cell division control protein 2 homolog; Cell division protein kinase 1; p34 protein kinase |

This product is for research use only, not for use in human, therapeutic or diagnostic procedure.

Background

The protein encoded by this gene is a member of the Ser/Thr protein kinase family. This protein is a catalytic subunit of the highly conserved protein kinase complex known as M-phase promoting factor (MPF), which is essential for G1/S and G2/M phase transitions of eukaryotic cell cycle. Mitotic cyclins stably associate with this protein and function as regulatory subunits. The kinase activity of this protein is controlled by cyclin accumulation and destruction through the cell cycle. The phosphorylation and dephosphorylation of this protein also play important regulatory roles in cell cycle control. Alternatively spliced transcript variants encoding different isoforms have been found for this gene.

Recommended Dilution

ELISA: 1:10000

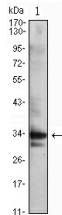
FC: 1:200 - 1:400

IF: 1:200 - 1:1000

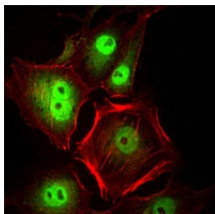
WB: 1:500 - 1:2000

Not yet tested in other applications.

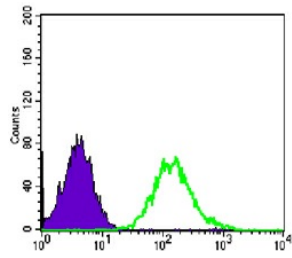
Images



Western Blot analysis using CDC2 Monoclonal antibody against Jurkat (1) cell lysate.



Immunofluorescence analysis of HeLa cells using CDC2 Monoclonal antibody (green). Red: Actin filaments have been labeled with Alexa Fluor-555 phalloidin.



Flow cytometric analysis of PC-2 cells using CDC2 Monoclonal antibody (green) and negative control (purple).

Storage

-20°C for one year

501 Changsheng S Rd, Nanhu Dist, Jiaxing, Zhejiang, China

Tel: 86 21 31007137 | E-mail: save@bt-laboratory.com | www.bt-laboratory.com