

CDC25C Monoclonal Antibody

Description

Product type	Primary Antibody
Code	BT-MCA0326
Host	Mouse
Isotype	IgG
Size	50ul, 100ul
Immunogen	Purified recombinant fragment of human CDC25C expressed in E. Coli.
Mol wt	N/A
Species reactivity	Human
Clonality	Monoclonal
Recommended application	WB, IHC-p, IF, ELISA
Concentration	1 mg/ml
Full name	M-phase inducer phosphatase 3
Synonyms	CDC25C; M-phase inducer phosphatase 3; Dual specificity phosphatase Cdc25C

This product is for research use only, not for use in human, therapeutic or diagnostic procedure.

Background

This gene encodes a conserved protein that plays a key role in the regulation of cell division. The encoded protein directs dephosphorylation of cyclin B-bound CDC2 and triggers entry into mitosis. It also suppresses p53-induced growth arrest. Multiple alternatively spliced transcript variants of this gene have been described.

Recommended Dilution

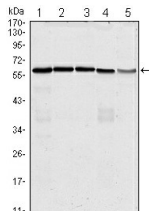
ELISA: 1:10000

IHC: 1:200 - 1:1000

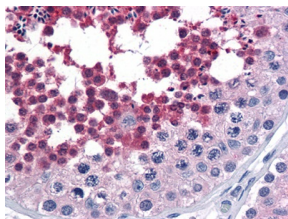
WB: 1:500 - 1:2000

Not yet tested in other applications.

Images



Western Blot analysis using CDC25C Monoclonal antibody against HeLa (1) K562 (2) PC-3 (3) HEK293 (4) and Raw264.7 (5) cell lysate.



Immunohistochemistry analysis of paraffin-embedded human Testis tissues with AEC staining using CDC25C Monoclonal antibody.

Storage

-20°C for one year

501 Changsheng S Rd, Nanhu Dist, Jiaxing, Zhejiang, China

Tel: 86 21 31007137 | E-mail: save@bt-laboratory.com | www.bt-laboratory.com