

## CREB-1 Monoclonal Antibody(4B4)

### Description

<b>Product type</b>	Primary Antibody
<b>Code</b>	BT-MCA0383
<b>Host</b>	Mouse
<b>Isotype</b>	IgG
<b>Size</b>	20ul, 50ul, 100ul
<b>Immunogen</b>	Recombinant Protein of CREB-1
<b>Mol wt</b>	N/A
<b>Species reactivity</b>	Human,Mouse
<b>Clonality</b>	Monoclonal
<b>Recommended application</b>	WB, IHC-p, IF
<b>Concentration</b>	1 mg/ml
<b>Full name</b>	Cyclic AMP-responsive element-binding protein 1
<b>Synonyms</b>	CREB1; Cyclic AMP-responsive element-binding protein 1; CREB-1; cAMP-responsive element-binding protein 1

This product is for research use only, not for use in human, therapeutic or diagnostic procedure.

### Background

This gene encodes a transcription factor that is a member of the leucine zipper family of DNA binding proteins. This protein binds as a homodimer to the cAMP-responsive element, an octameric palindrome. The protein is phosphorylated by several protein kinases, and induces transcription of genes in response to hormonal stimulation of the cAMP pathway. Alternate splicing of this gene results in several transcript variants encoding different isoforms.

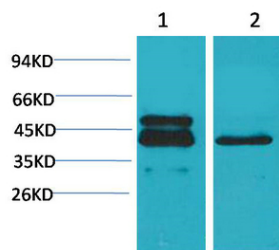
### Recommended Dilution

IHC: 1:100-200

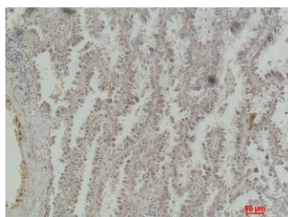
WB: 1:500-1000

Not yet tested in other applications.

### Images



Western blot analysis of 1) A431. 2) 3T3 using CREB-1 Monoclonal antibody.



Immunohistochemical analysis of paraffin-embedded Human Lung Carcinoma using CREB-1 Monoclonal antibody.

## Storage

-20°C for one year

501 Changsheng S Rd, Nanhu Dist, Jiaxing, Zhejiang, China

Tel: 86 21 31007137 | E-mail: [save@bt-laboratory.com](mailto:save@bt-laboratory.com) | [www.bt-laboratory.com](http://www.bt-laboratory.com)