

## Cyclin B1 mouse Monoclonal Antibody(5C1)

### Description

<b>Product type</b>	Primary Antibody
<b>Code</b>	BT-MCA0395
<b>Host</b>	Mouse
<b>Isotype</b>	IgG
<b>Size</b>	20ul, 50ul, 100ul
<b>Immunogen</b>	Synthetic Peptide of Cyclin B1 at AA range of 60-140
<b>Mol wt</b>	N/A
<b>Species reactivity</b>	Human,Rat,Mouse
<b>Clonality</b>	Monoclonal
<b>Recommended application</b>	IHC-p, IF
<b>Concentration</b>	1 mg/ml
<b>Full name</b>	CCNB1
<b>Synonyms</b>	CCNB1

This product is for research use only, not for use in human, therapeutic or diagnostic procedure.

### Background

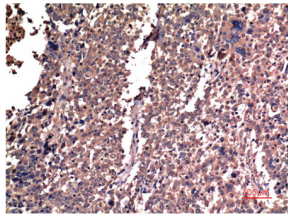
The protein encoded by this gene is a regulatory protein involved in mitosis. The gene product complexes with p34(cdc2) to form the maturation-promoting factor (MPF). Two alternative transcripts have been found, a constitutively expressed transcript and a cell cycle-regulated transcript, that is expressed predominantly during G2/M phase. The different transcripts result from the use of alternate transcription initiation sites.

### Recommended Dilution

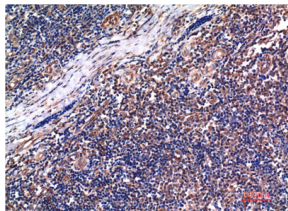
IHC: 1:100-200

Not yet tested in other applications.

### Images



Immunohistochemical analysis of paraffin-embedded Human Lung Carcinoma Tissue using Cyclin B1 Mouse Monoclonal antibody diluted at 1:200.



Immunohistochemical analysis of paraffin-embedded Human Tonsil Tissue using Cyclin B1 Mouse Monoclonal antibody diluted at 1:200.

## Storage

-20°C for one year

501 Changsheng S Rd, Nanhu Dist, Jiaxing, Zhejiang, China

Tel: 86 21 31007137 | E-mail: [save@bt-laboratory.com](mailto:save@bt-laboratory.com) | [www.bt-laboratory.com](http://www.bt-laboratory.com)