

Eg5 Monoclonal Antibody

Description

Product type	Primary Antibody
Code	BT-MCA0464
Host	Mouse
Isotype	IgG
Size	50ul, 100ul
Immunogen	Purified recombinant human Eg5 protein fragments expressed in E.coli.
Mol wt	N/A
Species reactivity	Human,Mouse,Rat,Bovine,Dog,Pig
Clonality	Monoclonal
Recommended application	WB, IF, ICC
Concentration	1 mg/ml
Full name	Kinesin-like protein KIF11
Synonyms	KIF11; EG5; KNSL1; TRIP5; Kinesin-like protein KIF11; Kinesin-like protein 1; Kinesin-like spindle protein HKSP; Kinesin-related motor protein Eg5; Thyroid receptor-interacting protein 5; TR-interacting protein 5; TRIP-5

This product is for research use only, not for use in human, therapeutic or diagnostic procedure.

Background

This gene encodes a motor protein that belongs to the kinesin-like protein family. Members of this protein family are known to be involved in various kinds of spindle dynamics. The function of this gene product includes chromosome positioning, centrosome separation and establishing a bipolar spindle during cell mitosis.

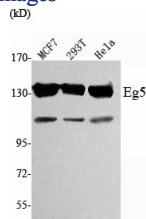
Recommended Dilution

IF: 1:100 - 1:500

WB: 1:1000 - 1:2000

Not yet tested in other applications.

Images



Western Blot analysis using Eg5 Monoclonal antibody against MCF7, 293T, HeLa cell lysate.

Storage

-20°C for one year