

Histone H3 (Tri Methyl Lys36) Monoclonal Antibody(Q12)

Description

Product type	Primary Antibody
Code	BT-MCA0705
Host	Mouse
Isotype	IgG
Size	20ul, 50ul, 100ul
Immunogen	Synthetic Peptide of Histone H3 (Tri Methyl Lys36)
Mol wt	15273
Species reactivity	Human,Mouse,Rat
Clonality	Monoclonal
Recommended application	WB
Concentration	1 mg/ml
Full name	Histone H3.2
Synonyms	H3K36ME3; HIST1H3A; H3FA; HIST1H3B; H3FL; HIST1H3C; H3FC; HIST1H3D; H3FB; HIST1H3E; H3FD; HIST1H3F; H3FI; HIST1H3G; H3FH; HIST1H3H; H3FK; HIST1H3I; H3FF; HIST1H3J; H3FJ; Histone H3.1; Histone H3; a; Histone H3; b; Histone H3; c; Histone H3; d; Histone H3; f; Histone H3; h; Histone H3; i; Histone H3; j; Histone H3; k; Histone H3; l; HIST2H3A; HIST2H3C; H3F2; H3FM; HIST2H3D; Histone H3.2; Histone H3; m; Histone H3; o; H3F3A; H3.3A; H3F3; PP781; H3F3B; H3.3B; Histone H3.3

This product is for research use only, not for use in human, therapeutic or diagnostic procedure.

Background

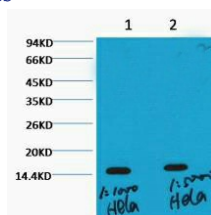
Histones are basic nuclear proteins that are responsible for the nucleosome structure of the chromosomal fiber in eukaryotes. This structure consists of approximately 146 bp of DNA wrapped around a nucleosome, an octamer composed of pairs of each of the four core histones (H2A, H2B, H3, and H4). The chromatin fiber is further compacted through the interaction of a linker histone, H1, with the DNA between the nucleosomes to form higher order chromatin structures. This gene is intronless and encodes a replication-dependent histone that is a member of the histone H3 family. Transcripts from this gene lack polyA tails; instead, they contain a palindromic termination element. This gene is found in the large histone gene cluster on chromosome 6p22-p21.3.

Recommended Dilution

WB: 1:1000-3000

Not yet tested in other applications.

Images



Western blot analysis of HeLa diluted at 1) 1:1000 2) 1:5000

Storage

-20°C for one year

501 Changsheng S Rd, Nanhu Dist, Jiaxing, Zhejiang, China

Tel: 86 21 31007137 | E-mail: save@bt-laboratory.com | www.bt-laboratory.com