

## Histone H3 (Tri Methyl Lys9) Monoclonal Antibody(2C3)

### Description

Product type	Primary Antibody
Code	BT-MCA0709
Host	Mouse
Isotype	IgG
Size	20ul, 50ul, 100ul
Immunogen	Synthetic Peptide of Histone H3 (Tri Methyl Lys9)
Mol wt	15273
Species reactivity	Human,Mouse,Rat
Clonality	Monoclonal
Recommended application	WB
Concentration	1 mg/ml
Full name	Histone H3.2
Synonyms	H3K9ME3; HIST1H3A; H3FA; HIST1H3B; H3FL; HIST1H3C; H3FC; HIST1H3D; H3FB; HIST1H3E; H3FD; HIST1H3F; H3FI; HIST1H3G; H3FH; HIST1H3H; H3FK; HIST1H3I; H3FF; HIST1H3J; H3FJ; Histone H3.1; Histone H3; a; Histone H3; b; Histone H3; c; Histone H3; d; Histone H3; f; Histone H3; h; Histone H3; i; Histone H3; j; Histone H3; k; Histone H3; l; HIST2H3A; HIST2H3C; H3F2; H3FM; HIST2H3D; Histone H3.2; Histone H3; m; Histone H3; o; H3F3A; H3.3A; H3F3; PP781; H3F3B; H3.3B; Histone H3.3

This product is for research use only, not for use in human, therapeutic or diagnostic procedure.

### Background

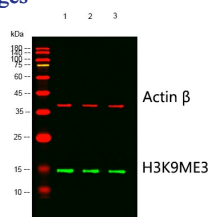
Histones are basic nuclear proteins that are responsible for the nucleosome structure of the chromosomal fiber in eukaryotes. This structure consists of approximately 146 bp of DNA wrapped around a nucleosome, an octamer composed of pairs of each of the four core histones (H2A, H2B, H3, and H4). The chromatin fiber is further compacted through the interaction of a linker histone, H1, with the DNA between the nucleosomes to form higher order chromatin structures. This gene is intronless and encodes a replication-dependent histone that is a member of the histone H3 family. Transcripts from this gene lack polyA tails; instead, they contain a palindromic termination element. This gene is found in the large histone gene cluster on chromosome 6p22-p21.3.

### Recommended Dilution

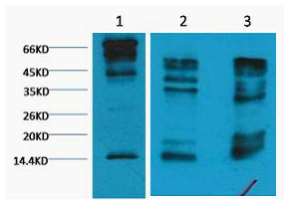
WB: 1:1000-2000

Not yet tested in other applications.

### Images



Western blot analysis of lysates from 1) HeLa, 2) Rat Testis tissue, 3) Raw264.7 cells, (Green) primary antibody was diluted at 1:1000, 4 $^{\circ}$ overnight, Dylight 800 secondary antibody was diluted at 1:10000, 37 $^{\circ}$ C 1hour. (Red) Actin Beta Polyclonal Antibody antibody was diluted at 1:5000 as loading control, 4 $^{\circ}$ C overnight, Dylight 680 secondary antibody was diluted at 1:10000, 37 $^{\circ}$ C 1hour.



Western blot analysis of 1) HeLa, 2) Rat Testis tissue, 3) Raw264.7 diluted at 1:2000.

### Storage

-20°C for one year

501 Changsheng S Rd, Nanhu Dist, Jiaxing, Zhejiang, China

Tel: 86 21 31007137 | E-mail: [save@bt-laboratory.com](mailto:save@bt-laboratory.com) | [www.bt-laboratory.com](http://www.bt-laboratory.com)