

HP1Beta Monoclonal Antibody

Description

Product type	Primary Antibody
Code	BT-MCA0733
Host	Mouse
Isotype	IgG
Size	50ul, 100ul
Immunogen	Purified recombinant human HP1Beta protein fragments expressed in E.coli.
Mol wt	N/A
Species reactivity	Human,Mouse,Rat,Bovine,Chicken,Dog,Pig
Clonality	Monoclonal
Recommended application	WB
Concentration	1 mg/ml
Full name	Chromobox protein homolog 1
Synonyms	CBX1; CBX; Chromobox protein homolog 1; HP1Hsbeta; Heterochromatin protein 1 homolog beta; HP1 beta; Heterochromatin protein p25; M31; Modifier 1 protein; p25beta

This product is for research use only, not for use in human, therapeutic or diagnostic procedure.

Background

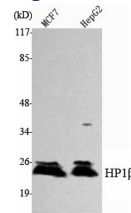
This gene encodes a highly conserved nonhistone protein, which is a member of the heterochromatin protein family. The protein is enriched in the heterochromatin and associated with centromeres. The protein has a single N-terminal chromodomain which can bind to histone proteins via methylated lysine residues, and a C-terminal chromo shadow-domain (CSD) which is responsible for the homodimerization and interaction with a number of chromatin-associated nonhistone proteins. The protein may play an important role in the epigenetic control of chromatin structure and gene expression. Several related pseudogenes are located on chromosomes 1, 3, and X. Multiple alternatively spliced variants, encoding the same protein, have been identified.

Recommended Dilution

WB: 1:1000 - 1:2000

Not yet tested in other applications.

Images



Western Blot analysis using HP1Beta Monoclonal antibody against MCF7, HepG2 cell lysate.

Storage

-20°C for one year