

JMJD1A Monoclonal Antibody

Description

Product type	Primary Antibody
Code	BT-MCA0799
Host	Mouse
Isotype	IgG
Size	50ul, 100ul
Immunogen	Purified recombinant fragment of human JMJD1A expressed in E. Coli.
Mol wt	N/A
Species reactivity	Human
Clonality	Monoclonal
Recommended application	WB, IF, ICC, ELISA
Concentration	1 mg/ml
Full name	Lysine-specific demethylase 3A
Synonyms	KDM3A; JHDM2A; JMJD1; JMJD1A; KIAA0742; TSGA; Lysine-specific demethylase 3A; JmjC domain-containing histone demethylation protein 2A; Jumonji domain-containing protein 1A

This product is for research use only, not for use in human, therapeutic or diagnostic procedure.

Background

This gene encodes a zinc finger protein that contains a jumonji domain and may play a role in hormone-dependent transcriptional activation. Alternative splicing results in multiple transcript variants.

Recommended Dilution

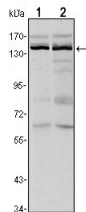
ELISA: 1:10000

IF: 1:200 - 1:1000

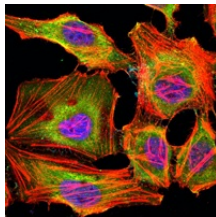
WB: 1:500 - 1:2000

Not yet tested in other applications.

Images



Western Blot analysis using JMJD1A Monoclonal antibody against HeLa (1) and HepG2 (2) cell lysate.



Immunofluorescence analysis of HeLa cells using JMJD1A Monoclonal antibody (green). Blue: DRAQ5 fluorescent DNA dye. Red: Actin filaments have been labeled with Alexa Fluor-555 phalloidin.

Storage

-20°C for one year

501 Changsheng S Rd, Nanhu Dist, Jiaxing, Zhejiang, China

Tel: 86 21 31007137 | E-mail: save@bt-laboratory.com | www.bt-laboratory.com