

JMJD1A Monoclonal Antibody

Description

Product type	Primary Antibody
Code	BT-MCA0800
Host	Mouse
Isotype	IgG
Size	50ul, 100ul
Immunogen	Purified recombinant fragment of human JMJD1A expressed in E. Coli.
Mol wt	N/A
Species reactivity	Human
Clonality	Monoclonal
Recommended application	WB, IHC-p, IF, ELISA
Concentration	1 mg/ml
Full name	Lysine-specific demethylase 3A
Synonyms	KDM3A; JHDM2A; JMJD1; JMJD1A; KIAA0742; TSGA; Lysine-specific demethylase 3A; JmjC domain-containing histone demethylation protein 2A; Jumonji domain-containing protein 1A

This product is for research use only, not for use in human, therapeutic or diagnostic procedure.

Background

This gene encodes a zinc finger protein that contains a jumonji domain and may play a role in hormone-dependent transcriptional activation. Alternative splicing results in multiple transcript variants.

Recommended Dilution

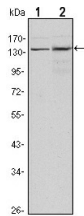
ELISA: 1:10000

IHC: 1:200 - 1:1000

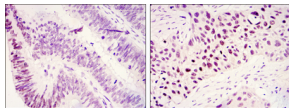
WB: 1:500 - 1:2000

Not yet tested in other applications.

Images



Western Blot analysis using JMJD1A Monoclonal antibody against HeLa (1) and HepG2 (2) cell lysate.



Immunohistochemistry analysis of paraffin-embedded colonic cancer tissues (left) and lung cancer tissues (right) with DAB staining using JMJD1A Monoclonal antibody.

Storage

-20°C for one year