

JMJD2A Monoclonal Antibody

Description

Product type	Primary Antibody
Code	BT-MCA0801
Host	Mouse
Isotype	IgG
Size	50ul, 100ul
Immunogen	Purified recombinant fragment of human JMJD2A expressed in E. Coli.
Mol wt	N/A
Species reactivity	Human
Clonality	Monoclonal
Recommended application	WB, IHC-p, IF, ICC, ELISA
Concentration	1 mg/ml
Full name	Lysine-specific demethylase 4A
Synonyms	KDM4A; JHDM3A; JMJD2; JMJD2A; KIAA0677; Lysine-specific demethylase 4A; JmjC domain-containing histone demethylation protein 3A; Jumonji domain-containing protein 2A

This product is for research use only, not for use in human, therapeutic or diagnostic procedure.

Background

This gene is a member of the Jumonji domain 2 (JMJD2) family and encodes a protein containing a JmjN domain, a JmjC domain, a JD2H domain, two TUDOR domains, and two PHD-type zinc fingers. This nuclear protein functions as a trimethylation-specific demethylase, converting specific trimethylated histone residues to the dimethylated form, and as a transcriptional repressor.

Recommended Dilution

ELISA: 1:10000

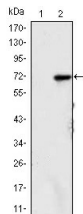
IF: 1:200 - 1:1000

IHC: 1:200 - 1:1000

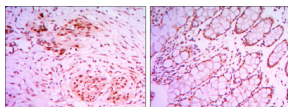
WB: 1:500 - 1:2000

Not yet tested in other applications.

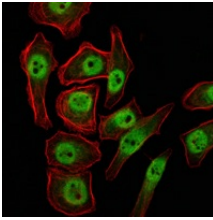
Images



Western Blot analysis using JMJD2A Monoclonal antibody against HEK293 (1) and JMJD2A-hlgGfC transfected HEK293 (2) cell lysate.



Immunohistochemistry analysis of paraffin-embedded colon cancer tissues (left) and human larynx cancer tissues (right) with DAB staining using JMJD2A Monoclonal antibody.



Immunofluorescence analysis of NTERA-2 cells using JMJD2A Monoclonal antibody (green). Red: Actin filaments have been labeled with Alexa Fluor-555 phalloidin.

Storage

-20°C for one year

501 Changsheng S Rd, Nanhu Dist, Jiaxing, Zhejiang, China

Tel: 86 21 31007137 | E-mail: save@bt-laboratory.com | www.bt-laboratory.com