

KLF15 Monoclonal Antibody

Description

Product type	Primary Antibody
Code	BT-MCA0810
Host	Mouse
Isotype	IgG
Size	50ul, 100ul
Immunogen	Purified recombinant fragment of human KLF15 expressed in E. Coli.
Mol wt	N/A
Species reactivity	Human
Clonality	Monoclonal
Recommended application	WB, ELISA
Concentration	1 mg/ml
Full name	Krueppel-like factor 15
Synonyms	KLF15; KKLf; Krueppel-like factor 15; Kidney-enriched krueppel-like factor

This product is for research use only, not for use in human, therapeutic or diagnostic procedure.

Background

Transcriptional activator. Binds to the GA element of the CLCNKA promoter.,similarity:Belongs to the Sp1 C2H2-type zinc-finger protein family.,similarity:Contains 3 C2H2-type zinc fingers.,tissue specificity:Highly expressed in liver, followed by heart, skeletal muscle, and kidney. Not expressed in bone marrow or lymphoid tissues.,

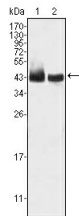
Recommended Dilution

ELISA: 1:10000

WB: 1:500 - 1:2000

Not yet tested in other applications.

Images



Western Blot analysis using KLF15 Monoclonal antibody against HepG2 (1) and SMMC-7721 (2) cell lysate.

Storage

-20°C for one year