

KLHL11 Monoclonal Antibody

Description

Product type	Primary Antibody
Code	BT-MCA0812
Host	Mouse
Isotype	IgG
Size	50ul, 100ul
Immunogen	Purified recombinant fragment of human KLHL11 expressed in E. Coli.
Mol wt	N/A
Species reactivity	Human
Clonality	Monoclonal
Recommended application	WB, IF, ICC, FCM, ELISA
Concentration	1 mg/ml
Full name	Kelch-like protein 11
Synonyms	KLHL11; Kelch-like protein 11

This product is for research use only, not for use in human, therapeutic or diagnostic procedure.

Background

N/A

Recommended Dilution

ELISA: 1:10000

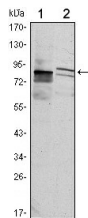
FC: 1:200 - 1:400

IF: 1:200 - 1:1000

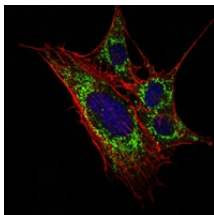
WB: 1:500 - 1:2000

Not yet tested in other applications.

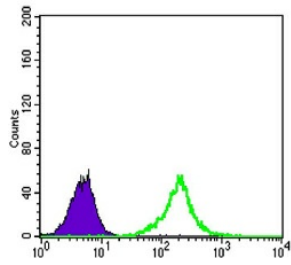
Images



Western Blot analysis using KLHL11 Monoclonal antibody against HeLa (1) and MCF-7 (2) cell lysate.



Immunofluorescence analysis of 3T3-L1 cells using KLHL11 Monoclonal antibody (green). Blue: DRAQ5 fluorescent DNA dye. Red: Actin filaments have been labeled with Alexa Fluor-555 phalloidin.



Flow cytometric analysis of K562 cells using KLHL11 Monoclonal antibody (green) and negative control (purple).

Storage

-20°C for one year

501 Changsheng S Rd, Nanhu Dist, Jiaxing, Zhejiang, China

Tel: 86 21 31007137 | E-mail: save@bt-laboratory.com | www.bt-laboratory.com