

KLHL21 Monoclonal Antibody

Description

Product type	Primary Antibody
Code	BT-MCA0816
Host	Mouse
Isotype	IgG
Size	50ul, 100ul
Immunogen	Purified recombinant fragment of human KLHL21 expressed in E. Coli.
Mol wt	N/A
Species reactivity	Human
Clonality	Monoclonal
Recommended application	WB, IHC-p, IF, ELISA
Concentration	1 mg/ml
Full name	Kelch-like protein 21
Synonyms	KLHL21; KIAA0469; Kelch-like protein 21

This product is for research use only, not for use in human, therapeutic or diagnostic procedure.

Background

Probable substrate-specific adapter of an E3 ubiquitin-protein ligase complex which mediates the ubiquitination and subsequent proteasomal degradation of target proteins. *pathway:Protein modification| protein ubiquitination.*, *similarity:Contains 1 BACK (BTB/Kelch associated) domain.*, *similarity:Contains 1 BTB (POZ) domain.*, *similarity:Contains 6 Kelch repeats.*, *subunit:Interacts with cul3.*

Recommended Dilution

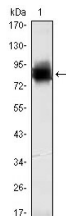
ELISA: 1:10000

IHC: 1:200 - 1:1000

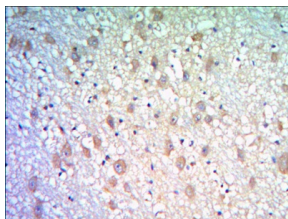
WB: 1:500 - 1:2000

Not yet tested in other applications.

Images



Western Blot analysis using KLHL21 Monoclonal antibody against recombinant KLHL21 protein (1).



Immunohistochemistry analysis of paraffin-embedded human brain tissues with DAB staining using KLHL21 Monoclonal antibody.

Storage

-20°C for one year

501 Changsheng S Rd, Nanhu Dist, Jiaxing, Zhejiang, China

Tel: 86 21 31007137 | E-mail: save@bt-laboratory.com | www.bt-laboratory.com