

KLHL22 Monoclonal Antibody

Description

Product type	Primary Antibody
Code	BT-MCA0817
Host	Mouse
Isotype	IgG
Size	50ul, 100ul
Immunogen	Purified recombinant fragment of human KLHL22 expressed in E. Coli.
Mol wt	N/A
Species reactivity	Human
Clonality	Monoclonal
Recommended application	WB, IF, ICC, ELISA
Concentration	1 mg/ml
Full name	Kelch-like protein 22
Synonyms	KLHL22; Kelch-like protein 22

This product is for research use only, not for use in human, therapeutic or diagnostic procedure.

Background

N/A

Recommended Dilution

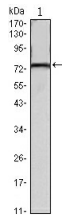
ELISA: 1:10000

IF: 1:200 - 1:1000

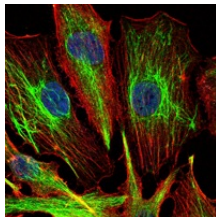
WB: 1:500 - 1:2000

Not yet tested in other applications.

Images



Western Blot analysis using KLHL22 Monoclonal antibody against mouse brain tissues lysate.



Immunofluorescence analysis of U251 cells using KLHL22 Monoclonal antibody (green). Blue: DRAQ5 fluorescent DNA dye. Red: Actin filaments have been labeled with Alexa Fluor-555 phalloidin.

Storage

-20°C for one year