

## Mi2- Alpha Monoclonal Antibody

### Description

<b>Product type</b>	Primary Antibody
<b>Code</b>	BT-MCA0885
<b>Host</b>	Mouse
<b>Isotype</b>	IgG
<b>Size</b>	50ul, 100ul
<b>Immunogen</b>	Purified recombinant human Mi2- $\alpha$ (C-terminus) protein fragments expressed in E.coli.
<b>Mol wt</b>	N/A
<b>Species reactivity</b>	Human,Mouse,Rat,Bovine,Dog,Pig
<b>Clonality</b>	Monoclonal
<b>Recommended application</b>	WB, IHC-p, IF, ICC, FCM
<b>Concentration</b>	1 mg/ml
<b>Full name</b>	Chromodomain-helicase-DNA-binding protein 3
<b>Synonyms</b>	CHD3; Chromodomain-helicase-DNA-binding protein 3; CHD-3; ATP-dependent helicase CHD3; Mi-2 autoantigen 240 kDa protein; Mi2-alpha; Zinc finger helicase; hZFH

This product is for research use only, not for use in human, therapeutic or diagnostic procedure.

### Background

This gene encodes a member of the CHD family of proteins which are characterized by the presence of chromo (chromatin organization modifier) domains and SNF2-related helicase/ATPase domains. This protein is one of the components of a histone deacetylase complex referred to as the Mi-2/NuRD complex which participates in the remodeling of chromatin by deacetylating histones. Chromatin remodeling is essential for many processes including transcription. Autoantibodies against this protein are found in a subset of patients with dermatomyositis. Three alternatively spliced transcripts encoding different isoforms have been described.

### Recommended Dilution

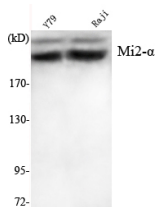
IF: 1:100 - 1:500

IHC: 1:500 - 1:1000

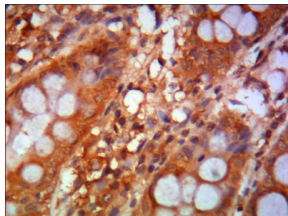
WB: 1:1000 - 1:2000

Not yet tested in other applications.

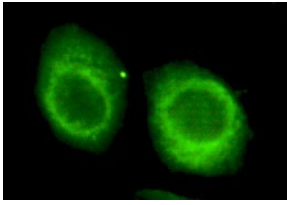
### Images



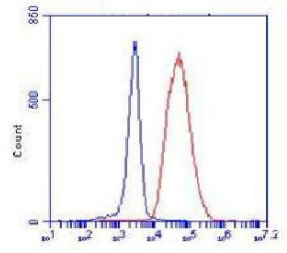
Western Blot analysis using Mi2-Alpha Monoclonal antibody against Y7P, Raji cell lysate.



Immunohistochemistry analysis of paraffin-embedded human colon using Mi2-Alpha Monoclonal antibody.



Immunofluorescence analysis of HeLa cells using Mi2-Alpha Monoclonal antibody.



Flow cytometric analysis of K562 cells stained with Mi2-Alpha Monoclonal antibody (red), followed by FITC-conjugated goat anti-mouse IgG. Blue line histogram represents the isotype control, normal mouse IgG.

### Storage

-20°C for one year

501 Changsheng S Rd, Nanhu Dist, Jiaxing, Zhejiang, China

Tel: 86 21 31007137 | E-mail: [save@bt-laboratory.com](mailto:save@bt-laboratory.com) | [www.bt-laboratory.com](http://www.bt-laboratory.com)