

MSH2 Monoclonal Antibody

Description

Product type	Primary Antibody
Code	BT-MCA0897
Host	Mouse
Isotype	IgG
Size	50ul, 100ul
Immunogen	Purified recombinant fragment of human MSH2 expressed in E. Coli.
Mol wt	N/A
Species reactivity	Human,Monkey
Clonality	Monoclonal
Recommended application	WB, IHC-p, IF, ICC, ELISA
Concentration	1 mg/ml
Full name	DNA mismatch repair protein Msh2
Synonyms	MSH2; DNA mismatch repair protein Msh2; hMSH2; MutS protein homolog 2

This product is for research use only, not for use in human, therapeutic or diagnostic procedure.

Background

This locus is frequently mutated in hereditary nonpolyposis colon cancer (HNPCC). When cloned, it was discovered to be a human homolog of the E. coli mismatch repair gene mutS, consistent with the characteristic alterations in microsatellite sequences (RER+ phenotype) found in HNPCC. Two transcript variants encoding different isoforms have been found for this gene.

Recommended Dilution

ELISA: 1:10000

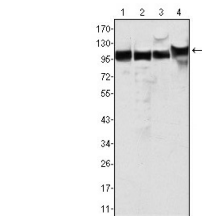
IF: 1:200 - 1:1000

IHC: 1:200 - 1:1000

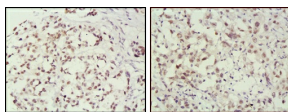
WB: 1:500 - 1:2000

Not yet tested in other applications.

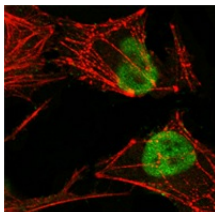
Images



Western Blot analysis using MSH2 Monoclonal antibody against HeLa (1) A549 (2) A431 (3) and HEK293 (4) cell lysate.



Immunohistochemistry analysis of paraffin-embedded human breast cancer (left) and lung cancer (right) tissues, showing nuclear localization with DAB staining using MSH2 Monoclonal antibody.



Confocal immunofluorescence analysis of HeLa cells using MSH2 Monoclonal antibody (green), showing nuclear localization. Red: Actin filaments have been labeled with Alexa Fluor-555 phalloidin.

Storage

-20°C for one year

501 Changsheng S Rd, Nanhu Dist, Jiaxing, Zhejiang, China

Tel: 86 21 31007137 | E-mail: save@bt-laboratory.com | www.bt-laboratory.com