

## Msi2 Monoclonal Antibody

### Description

Product type	Primary Antibody
Code	BT-MCA0899
Host	Mouse
Isotype	IgG
Size	50ul, 100ul
Immunogen	Purified recombinant fragment of human Msi2 expressed in E. Coli.
Mol wt	N/A
Species reactivity	Human
Clonality	Monoclonal
Recommended application	WB, IHC-p, IF, ELISA
Concentration	1 mg/ml
Full name	RNA-binding protein Musashi homolog 2
Synonyms	MSI2; RNA-binding protein Musashi homolog 2; Musashi-2

This product is for research use only, not for use in human, therapeutic or diagnostic procedure.

### Background

This gene encodes an RNA-binding protein that is a member of the Musashi protein family. The encoded protein is transcriptional regulator that targets genes involved in development and cell cycle regulation. Mutations in this gene are associated with poor prognosis in certain types of cancers. This gene has also been shown to be rearranged in certain cancer cells.

### Recommended Dilution

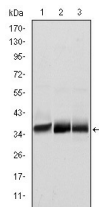
ELISA: 1:10000

IHC: 1:200 - 1:1000

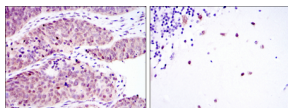
WB: 1:500 - 1:2000

Not yet tested in other applications.

### Images



Western Blot analysis using Msi2 Monoclonal antibody against NTERA-2 (1) SW620 (2) and T47D (3) cell lysate.



Immunohistochemistry analysis of paraffin-embedded ovarian cancer (left) and cerebellum tissues (right) with DAB staining using Msi2 Monoclonal antibody.

### Storage

-20°C for one year