

## p63 Monoclonal Antibody

### Description

|                                |   |
|--------------------------------|---|
| <b>Product type</b>            | Primary Antibody  |
| <b>Code</b>                    | BT-MCA0980  |
| <b>Host</b>                    | Mouse   |
| <b>Isotype</b>                 | IgG   |
| <b>Size</b>                    | 50ul, 100ul   |
| <b>Immunogen</b>               | Synthesized peptide of human p63.   |
| <b>Mol wt</b>                  | N/A   |
| <b>Species reactivity</b>      | Human,Mouse,Rat,Monkey  |
| <b>Clonality</b>               | Monoclonal  |
| <b>Recommended application</b> | WB, IHC-p, IF, ELISA  |
| <b>Concentration</b>           | 1 mg/ml   |
| <b>Full name</b>               | Tumor protein 63  |
| <b>Synonyms</b>                | TP63; KET; P63; P73H; P73L; TP73L; Tumor protein 63; p63; Chronic ulcerative stomatitis protein; CUSP; Keratinocyte transcription factor KET; Transformation-related protein 63; TP63; Tumor protein p73-like; p73L; p40; p51 |

**This product is for research use only, not for use in human, therapeutic or diagnostic procedure.**

### Background

This gene encodes a member of the p53 family of transcription factors. The functional domains of p53 family proteins include an N-terminal transactivation domain, a central DNA-binding domain and an oligomerization domain. Alternative splicing of this gene and the use of alternative promoters results in multiple transcript variants encoding different isoforms that vary in their functional properties. These isoforms function during skin development and maintenance, adult stem/progenitor cell regulation, heart development and premature aging. Some isoforms have been found to protect the germline by eliminating oocytes or testicular germ cells that have suffered DNA damage. Mutations in this gene are associated with ectodermal dysplasia, and cleft lip/palate syndrome 3 (EEC3)| split-hand/foot malformation 4 (SHFM4)| ankyloblepharon-ectodermal defects-cleft lip/palate| ADULT syndrome (acro-dermato-ungual-lacrim

### Recommended Dilution

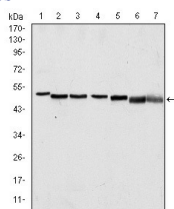
ELISA: 1:10000

IHC: 1:200 - 1:1000

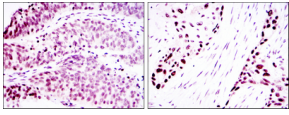
WB: 1:500 - 1:2000

Not yet tested in other applications.

### Images



Western Blot analysis using p63 Monoclonal antibody against A431 (1) HeLa (2) Jurkat (3) THP-1 (4) NIH/3T3 (5) Cos7 (6) and PC-12 (7) cell lysate.



Immunohistochemistry analysis of paraffin-embedded ovarian cancer (left) and lung cancer (right) with DAB staining using p63 Monoclonal antibody.

### Storage

-20°C for one year

501 Changsheng S Rd, Nanhu Dist, Jiaxing, Zhejiang, China

Tel: 86 21 31007137 | E-mail: [save@bt-laboratory.com](mailto:save@bt-laboratory.com) | [www.bt-laboratory.com](http://www.bt-laboratory.com)