

## TIF1 Gamma Monoclonal Antibody

### Description

Product type	Primary Antibody
Code	BT-MCA1207
Host	Mouse
Isotype	IgG
Size	50ul, 100ul
Immunogen	Purified recombinant human TIF1 $\gamma$ (C-terminus) protein fragments expressed in E.coli.
Mol wt	N/A
Species reactivity	Human,Mouse,Rat,Bovine,Dog,Pig
Clonality	Monoclonal
Recommended application	WB, IF, ICC
Concentration	1 mg/ml
Full name	E3 ubiquitin-protein ligase TRIM33
Synonyms	TRIM33; KIAA1113; RFG7; TIF1G; E3 ubiquitin-protein ligase TRIM33; Ectodermin homolog; RET-fused gene 7 protein; Protein Rfg7; Transcription intermediary factor 1-gamma; TIF1-gamma; Tripartite motif-containing protein 33

This product is for research use only, not for use in human, therapeutic or diagnostic procedure.

### Background

The protein encoded by this gene is thought to be a transcriptional corepressor. However, molecules that interact with this protein have not yet been identified. The protein is a member of the tripartite motif family. This motif includes three zinc-binding domains, a RING, a B-box type 1 and a B-box type 2, and a coiled-coil region. Three alternatively spliced transcript variants for this gene have been described, however, the full-length nature of one variant has not been determined.

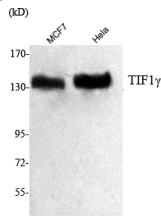
### Recommended Dilution

IF: 1:100 - 1:500

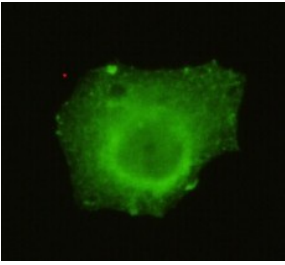
WB: 1:1000 - 1:2000

Not yet tested in other applications.

### Images



Western Blot analysis using TIF1 Gamma Monoclonal antibody against MCF7 cell lysate, HeLa nuclear extract.



Immunofluorescence analysis of HeLa cells using TIF1Gamma Monoclonal antibody.

### Storage

-20°C for one year

501 Changsheng S Rd, Nanhu Dist, Jiaxing, Zhejiang, China

Tel: 86 21 31007137 | E-mail: [save@bt-laboratory.com](mailto:save@bt-laboratory.com) | [www.bt-laboratory.com](http://www.bt-laboratory.com)