

## Beta-actin Monoclonal Antibody(M5)

### Description

Product type	Primary Antibody
Code	BT-MCA1340
Host	Mouse
Isotype	IgG
Size	20ul, 50ul, 100ul
Immunogen	Synthetic Peptide of Beta-actin
Mol wt	41737
Species reactivity	Human,Rat,Mouse,Monkey,Dog
Clonality	Monoclonal
Recommended application	WB
Concentration	1 mg/ml
Full name	Actin cytoplasmic 1
Synonyms	ACTB; Actin; cytoplasmic 1; Beta-actin

This product is for research use only, not for use in human, therapeutic or diagnostic procedure.

### Background

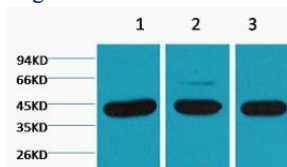
This gene encodes one of six different actin proteins. Actins are highly conserved proteins that are involved in cell motility, structure, and integrity. This actin is a major constituent of the contractile apparatus and one of the two nonmuscle cytoskeletal actins.

### Recommended Dilution

WB: 1:500-10000

Not yet tested in other applications.

### Images



Western blot analysis of 1) HeLa, 2) Mouse Brain tissue, 3) Rat Brain tissue diluted at 1:5000.

### Storage

-20°C for one year

501 Changsheng S Rd, Nanhu Dist, Jiaxing, Zhejiang, China

Tel: 86 21 31007137 | E-mail: [save@bt-laboratory.com](mailto:save@bt-laboratory.com) | [www.bt-laboratory.com](http://www.bt-laboratory.com)