

RUNX1 Monoclonal Antibody

Description

Product type	Antibody
Code	BT-MCA2144
Host	Mouse
Isotype	Mouse IgG1
Size	100µL, 50µL
Immunogen	Synthesized peptide of human RUNX1.
Mol wt	55kDa
Species reactivity	Human
Clonality	Monoclonal
Recommended application	WB, ICC
Concentration	N/A
Full name	N/A
Synonyms	AML1;CBFA2;EVI-1;AMLCR1;PEBP2aB;AML1-EVI-1;RUNX1

This product is for research use only, not for use in human, therapeutic or diagnostic procedure.

Background

Core binding factor (CBF) is a heterodimeric transcription factor that binds to the core element of many enhancers and promoters. The protein encoded by this gene represents the alpha subunit of CBF and is thought to be involved in the development of normal hematopoiesis. Chromosomal translocations involving this gene are well-documented and have been associated with several types of leukemia. Three transcript variants encoding different isoforms have been found for this gene. (provided by RefSeq) Tissue specificity: Expressed in all tissues examined except brain and heart. Highest levels in thymus, bone marrow and peripheral blood.

Recommended Dilution

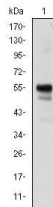
WB: 1:500 - 1:2000

ICC: 1:200 - 1:1000

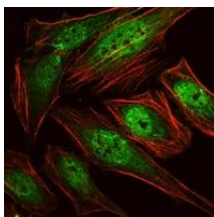
ELISA: 1:10000

Not yet tested in other applications.

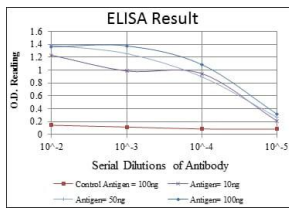
Images



Western blot analysis using RUNX1 mouse mAb against Jurkat cell lysate.



Immunofluorescence analysis of HeLa cells using RUNX1 mouse mAb (green). Red: Actin filaments have been labeled with Alexa Fluor-555 phalloidin.



Red: Control Antigen (100ng); Purple: Antigen (10ng); Green: Antigen (50ng); Blue: Antigen (100ng);

Storage

Store at 4°C short term. Aliquot and store at -20°C long term.

501 Changsheng S Rd, Nanhu Dist, Jiaxing, Zhejiang, China

Tel: 86 21 31007137 | E-mail: save@bt-laboratory.com | www.bt-laboratory.com