

HSP27 Monoclonal Antibody

Description

Product type	Antibody
Code	BT-MCA2261
Host	Mouse
Isotype	Mouse IgG1
Size	100μL, 50μL
Immunogen	Purified recombinant fragment of human HSP27 expressed in E. Coli.
Mol wt	27kDa
Species reactivity	Human,Rat
Clonality	Monoclonal
Recommended application	WB,IHC,ICC,FCM
Concentration	N/A
Full name	N/A
Synonyms	CMT2F;HMN2B;HSP27;HSP28;Hsp25;SRP27;HS.76067;DKFZp586P1322;HSPB1

This product is for research use only, not for use in human, therapeutic or diagnostic procedure.

Background

The protein encoded by this gene is induced by environmental stress and developmental changes. The encoded protein is involved in stress resistance and actin organization and translocates from the cytoplasm to the nucleus upon stress induction. Defects in this gene are a cause of Charcot-Marie-Tooth disease type 2F (CMT2F) and distal hereditary motor neuropathy (dHMN). (provided by RefSeq) Tissue specificity: Detected in all tissues tested: skeletal muscle, heart, aorta, large intestine, small intestine, stomach, esophagus, bladder, adrenal gland, thyroid, pancreas, testis, adipose tissue, kidney, liver, spleen, cerebral cortex, blood serum and cerebrospinal fluid. Highest levels are found in the heart and in tissues composed of striated and smooth muscle.

Recommended Dilution

WB: 1:500 - 1:2000

IHC-p: 1:200 - 1:1000

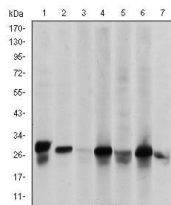
ICC: 1:200 - 1:1000

FCM: 1:200 - 1:400

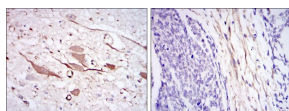
ELISA: 1:10000

Not yet tested in other applications.

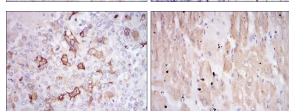
Images



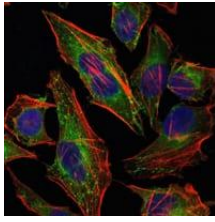
Western blot analysis using HSP27 mouse mAb against HeLa (1), A549 (2), Jurkat (3), A431 (4), HEK293(5), HepG2 (6) and PC-12 (7) cell lysate.



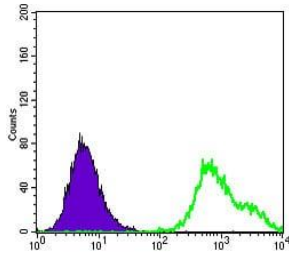
Immunohistochemical analysis of paraffin-embedded brain tissues (left) and esophageal cancer tissues (right) using HSP27 mouse mAb with DAB staining.



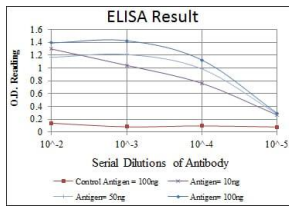
Immunohistochemical analysis of paraffin-embedded breast cancer tissues (left) and cardiac muscle tissues (right) using HSP27 mouse mAb with DAB staining.



Immunofluorescence analysis of HeLa cells using HSP27 mouse mAb (green). Blue: DRAQ5 fluorescent DNA dye. Red: Actin filaments have been labeled with Alexa Fluor-555 phalloidin.



Flow cytometric analysis of HepG2 cells using HSP27 mouse mAb (green) and negative control (purple).



Red: Control Antigen (100ng); Purple: Antigen (10ng); Green: Antigen (50ng); Blue: Antigen (100ng);

Storage

Store at 4°C short term. Aliquot and store at -20°C long term.

501 Changsheng S Rd, Nanhu Dist, Jiaxing, Zhejiang, China

Tel: 86 21 31007137 | E-mail: save@bt-laboratory.com | www.bt-laboratory.com