

CBX5 Monoclonal Antibody

Description

Product type	Antibody
Code	BT-MCA2383
Host	Mouse
Isotype	Mouse IgG1
Size	100µL, 50µL
Immunogen	Purified recombinant fragment of human CBX5 (AA: 1-191) expressed in E. Coli.
Mol wt	22.2kDa
Species reactivity	Human,Mouse
Clonality	Monoclonal
Recommended application	WB,IHC,ICC
Concentration	N/A
Full name	N/A
Synonyms	HP1;HP1A;HEL25

This product is for research use only, not for use in human, therapeutic or diagnostic procedure.

Background

N/A

Recommended Dilution

WB: 1:500 - 1:2000

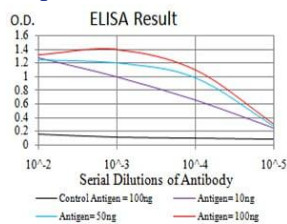
IHC-p: 1:200 - 1:1000

ICC: 1:200 - 1:1000

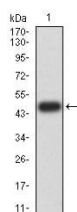
ELISA: 1:10000

Not yet tested in other applications.

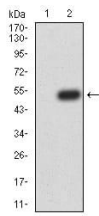
Images



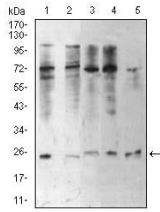
Black line: Control Antigen (100 ng); Purple line: Antigen(10ng); Blue line: Antigen (50 ng); Red line: Antigen (100 ng);



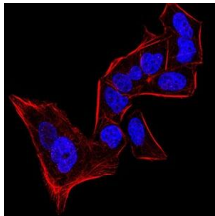
Western blot analysis using CBX5 mAb against human CBX5 (AA: 1-191) recombinant protein.
(Expected MW is 48.2 kDa)



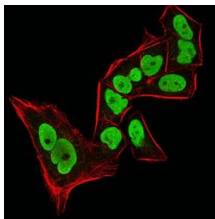
Western blot analysis using CBX5 mAb against HEK293 (1) and CBX5 (AA: 1-191)-hIgGFc transfected HEK293 (2) cell lysate.



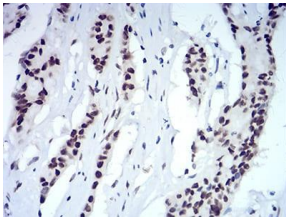
Western blot analysis using CBX5 mouse mAb against HeLa (1), NIH/3T3 (2), K562 (3), MCF-7 (4), and A431 (5) cell lysate.



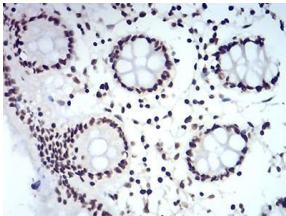
Immunofluorescence analysis of HeLa cells using CBX5 mouse mAb. Blue: DRAQ5 fluorescent DNA dye. Red: Actin filaments have been labeled with Alexa Fluor-555 phalloidin.



Immunofluorescence analysis of HeLa cells using CBX5 mouse mAb (green). Blue: DRAQ5 fluorescent DNA dye. Red: Actin filaments have been labeled with Alexa Fluor-555 phalloidin. Secondary antibody from Fisher (Cat#: 35503)



Immunohistochemical analysis of paraffin-embedded colon cancer tissues using CBX5 mouse mAb with DAB staining.



Immunohistochemical analysis of paraffin-embedded colon tissues using CBX5 mouse mAb with DAB staining.

Storage

Store at 4°C short term. Aliquot and store at -20°C long term.

501 Changsheng S Rd, Nanhui Dist, Jiaxing, Zhejiang, China

Tel: 86 21 31007137 | E-mail: save@bt-laboratory.com | www.bt-laboratory.com