

KDM1A Monoclonal Antibody

Description

Product type	Antibody
Code	BT-MCA2603
Host	Mouse
Isotype	Mouse IgG1
Size	100μL, 50μL
Immunogen	Purified recombinant fragment of human KDM1A (AA: 55-263) expressed in E. Coli.
Mol wt	93kDa
Species reactivity	Human,Monkey
Clonality	Monoclonal
Recommended application	WB,IHC,ICC,FCM
Concentration	N/A
Full name	N/A
Synonyms	AOF2;CPRF;KDM1;LSD1;BHC110

This product is for research use only, not for use in human, therapeutic or diagnostic procedure.

Background

N/A

Recommended Dilution

WB: 1:500 - 1:2000

IHC-p: 1:200 - 1:1000

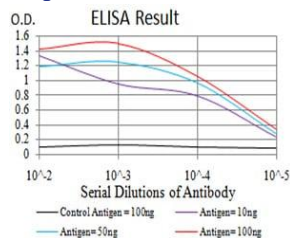
ICC: 1:200 - 1:1000

FCM: 1:200 - 1:400

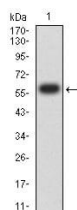
ELISA: 1:10000

Not yet tested in other applications.

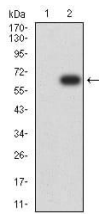
Images



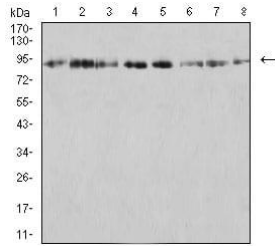
Black line: Control Antigen (100 ng);Purple line: Antigen (10ng); Blue line: Antigen (50 ng); Red line:Antigen (100 ng)



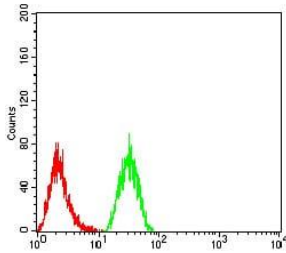
Western blot analysis using KDM1A mAb against human KDM1A (AA: 55-263) recombinant protein. (Expected MW is 60.3 kDa)



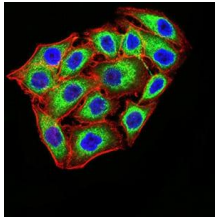
Western blot analysis using KDM1A mAb against HEK293 (1) and KDM1A (AA: 55-263)-hIgGFc transfected HEK293 (2) cell lysate.



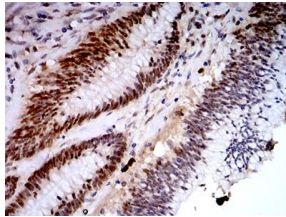
Western blot analysis using KDM1A mouse mAb against SK-Br-3 (1), K562 (2), SW480 (3), Jurkat (4), HeLa (5), COS7 (6), T47D (7), and HCT116 (8) cell lysate.



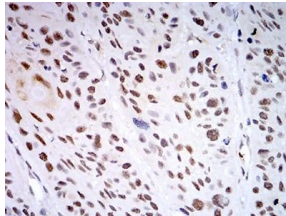
Flow cytometric analysis of HeLa cells using KDM1A mouse mAb (green) and negative control (red).



Immunofluorescence analysis of MCF-7 cells using KDM1A mouse mAb (green). Blue: DRAQ5 fluorescent DNA dye. Red: Actin filaments have been labeled with Alexa Fluor- 555 phalloidin. Secondary antibody from Fisher (Cat#: 35503)



Immunohistochemical analysis of paraffin-embedded colon cancer tissues using KDM1A mouse mAb with DAB staining.



Immunohistochemical analysis of paraffin-embedded esophageal cancer tissues using KDM1A mouse mAb with DAB staining.

Storage

Store at 4°C short term. Aliquot and store at -20°C long term.

501 Changsheng S Rd, Nanhū Dist, Jiaxing, Zhejiang, China

Tel: 86 21 31007137 | E-mail: save@bt-laboratory.com | www.bt-laboratory.com