

## CAPN1 Monoclonal Antibody

### Description

|                                |  |
|--------------------------------|--|
| <b>Product type</b>            | Antibody   |
| <b>Code</b>                    | BT-MCA2753   |
| <b>Host</b>                    | Mouse  |
| <b>Isotype</b>                 | Mouse IgG1   |
| <b>Size</b>                    | 100µL, 50µL  |
| <b>Immunogen</b>               | Purified recombinant fragment of human CAPN1 (AA: 501-714) expressed in E. Coli. |
| <b>Mol wt</b>                  | 81.9kDa  |
| <b>Species reactivity</b>      | Human  |
| <b>Clonality</b>               | Monoclonal   |
| <b>Recommended application</b> | FCM  |
| <b>Concentration</b>           | N/A  |
| <b>Full name</b>               | N/A  |
| <b>Synonyms</b>                | CANP;muCL;CANP1;SPG76;CANPL1;muCANP  |

This product is for research use only, not for use in human, therapeutic or diagnostic procedure.

### Background

The calpains, calcium-activated neutral proteases, are nonlysosomal, intracellular cysteine proteases. The mammalian calpains include ubiquitous, stomach-specific, and muscle-specific proteins. The ubiquitous enzymes consist of heterodimers with distinct large, catalytic subunits associated with a common small, regulatory subunit. This gene encodes the large subunit of the ubiquitous enzyme, calpain 1. Several transcript variants encoding two different isoforms have been found for this gene. [provided by RefSeq, Nov 2010]

### Recommended Dilution

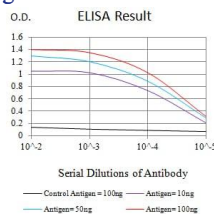
WB: 1:500 - 1:2000

FCM: 1:200 - 1:400

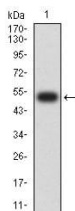
ELISA: 1:10000

Not yet tested in other applications.

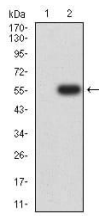
### Images



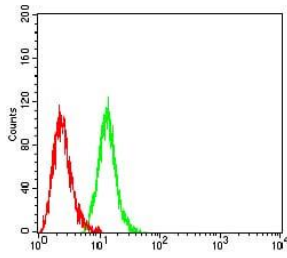
Black line: Control Antigen (100 ng);Purple line: Antigen (10ng); Blue line: Antigen (50 ng); Red line:Antigen (100 ng)



Western blot analysis using CAPN1 mAb against human CAPN1 (AA: 501-714) recombinant protein.



Western blot analysis using CAPN1 mAb against HEK293 (1) and CAPN1 (AA: 501-714)-hIgGFc transfected HEK293 (2) cell lysate.



Flow cytometric analysis of HeLa cells using CAPN1 mouse mAb (green) and negative control (red).

### Storage

Store at 4°C short term. Aliquot and store at -20°C long term.

501 Changsheng S Rd, Nanhu Dist, Jiaxing, Zhejiang, China

Tel: 86 21 31007137 | E-mail: [save@bt-laboratory.com](mailto:save@bt-laboratory.com) | [www.bt-laboratory.com](http://www.bt-laboratory.com)