

## RAF1 Monoclonal Antibody

### Description

|                                |   |
|--------------------------------|---|
| <b>Product type</b>            | Antibody  |
| <b>Code</b>                    | BT-MCA3221  |
| <b>Host</b>                    | Mouse   |
| <b>Isotype</b>                 | Mouse IgG1  |
| <b>Size</b>                    | 100µL, 50µL   |
| <b>Immunogen</b>               | Purified recombinant fragment of human RAF1 expressed in E. Coli. |
| <b>Mol wt</b>                  | 73kDa   |
| <b>Species reactivity</b>      | Human   |
| <b>Clonality</b>               | Monoclonal  |
| <b>Recommended application</b> | WB,IHC,FCM  |
| <b>Concentration</b>           | N/A   |
| <b>Full name</b>               | N/A   |
| <b>Synonyms</b>                | NS5;CRAF;Raf-1;c-Raf  |

**This product is for research use only, not for use in human, therapeutic or diagnostic procedure.**

### Background

This gene is the cellular homolog of viral raf gene (v-raf). The encoded protein is a MAP kinase kinase kinase (MAP3K), which functions downstream of the Ras family of membrane associated GTPases to which it binds directly. Once activated, the cellular RAF1 protein can phosphorylate to activate the dual specificity protein kinases MEK1 and MEK2, which in turn phosphorylate to activate the serine/threonine specific protein kinases, ERK1 and ERK2. Activated ERKs are pleiotropic effectors of cell physiology and play an important role in the control of gene expression involved in the cell division cycle, apoptosis, cell differentiation and cell migration. Mutations in this gene are associated with Noonan syndrome 5 and LEOPARD syndrome 2.

### Recommended Dilution

WB: 1:500 - 1:2000

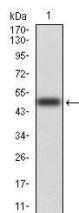
IHC-p: 1:200 - 1:1000

FCM: 1:200 - 1:400

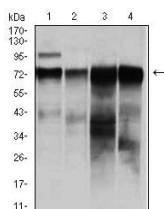
ELISA: 1:10000

Not yet tested in other applications.

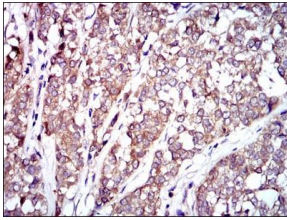
### Images



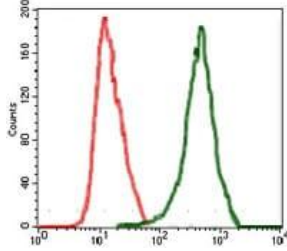
Western blot analysis using RAF1 mAb against human RAF1 (AA: 198-407) recombinant protein.  
(Expected MW is 48.6 kDa)



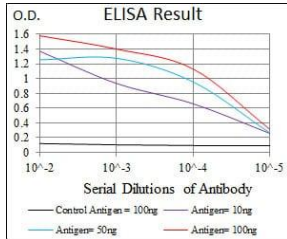
Western blot analysis using RAF1 mouse mAb against HeLa (1), A431 (2), HepG (3), and SW620 (4) cell lysate.



Immunohistochemical analysis of paraffin-embedded bladder cancer tissues using RAF1 mouse mAb with DAB staining.



Flow cytometric analysis of MCF-7 cells using RAF1 mouse mAb (green) and negative control (red).



Black line: Control Antigen (100 ng); Purple line: Antigen(10ng); Blue line: Antigen (50 ng); Red line: Antigen (100 ng);

### Storage

Store at 4°C short term. Aliquot and store at -20°C long term.

501 Changsheng S Rd, Nanhu Dist, Jiaxing, Zhejiang, China

Tel: 86 21 31007137 | E-mail: [save@bt-laboratory.com](mailto:save@bt-laboratory.com) | [www.bt-laboratory.com](http://www.bt-laboratory.com)