

JAM3 Monoclonal Antibody

Description

Product type	Antibody
Code	BT-MCA3369
Host	Mouse
Isotype	Mouse IgG1
Size	100µL, 50µL
Immunogen	Purified recombinant fragment of human JAM3 (AA: extra 32-241) expressed in E. Coli.
Mol wt	35kDa
Species reactivity	Human
Clonality	Monoclonal
Recommended application	WB,FCM
Concentration	N/A
Full name	N/A
Synonyms	JAMC;JAM-2;JAM-3;JAM-C

This product is for research use only, not for use in human, therapeutic or diagnostic procedure.

Background

Tight junctions represent one mode of cell-to-cell adhesion in epithelial or endothelial cell sheets, forming continuous seals around cells and serving as a physical barrier to prevent solutes and water from passing freely through the paracellular space. The protein encoded by this immunoglobulin superfamily gene member is localized in the tight junctions between high endothelial cells. Unlike other proteins in this family, the this protein is unable to adhere to leukocyte cell lines and only forms weak homotypic interactions. The encoded protein is a member of the junctional adhesion molecule protein family and acts as a receptor for another member of this family. A mutation in an intron of this gene is associated with hemorrhagic destruction of the brain, subependymal calcification, and congenital cataracts. Alternative splicing results in multiple transcript variants.

Recommended Dilution

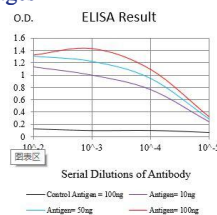
WB: 1:500 - 1:2000

FCM: 1:200 - 1:400

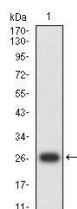
ELISA: 1:10000

Not yet tested in other applications.

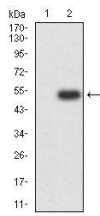
Images



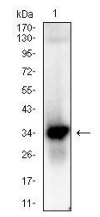
Black line: Control Antigen (100 ng);Purple line: Antigen (10ng); Blue line: Antigen (50 ng); Red line:Antigen (100 ng)



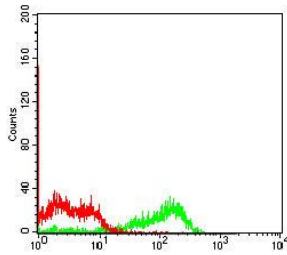
Western blot analysis using JAM3 mAb against human JAM3 (AA: extra 32-241) recombinant protein. (Expected MW is 26.8 kDa)



Western blot analysis using JAM3 mAb against HEK293-6e (1) and JAM3 (AA: extra 32-241)-hlgGFc transfected HEK293-6e (2) cell lysate.



Western blot analysis using JAM3 mouse mAb against SH-SY5Y (1) cell lysate.



Flow cytometric analysis of Hek293 cells using JAM3 mouse mAb (green) and negative control (red).

Storage

Store at 4°C short term. Aliquot and store at -20°C long term.

501 Changsheng S Rd, Nanhu Dist, Jiaxing, Zhejiang, China

Tel: 86 21 31007137 | E-mail: save@bt-laboratory.com | www.bt-laboratory.com