

LAMP1 Monoclonal Antibody

Description

Product type	Antibody
Code	BT-MCA3592
Host	Mouse
Isotype	Mouse IgG1
Size	100µL, 50µL
Immunogen	Purified recombinant fragment of human LAMP1 (AA: 182-414) expressed in E. Coli.
Mol wt	44.9kDa
Species reactivity	Human,Monkey
Clonality	Monoclonal
Recommended application	WB,IHC,ICC,FCM
Concentration	N/A
Full name	N/A
Synonyms	LAMPA;CD107a;LGP120

This product is for research use only, not for use in human, therapeutic or diagnostic procedure.

Background

The protein encoded by this gene is a member of a family of membrane glycoproteins. This glycoprotein provides selectins with carbohydrate ligands. It may also play a role in tumor cell metastasis.

Recommended Dilution

WB: 1:500 - 1:2000

IHC-p: 1:200 - 1:1000

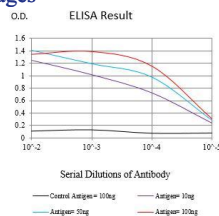
ICC: 1:200 - 1:1000

FCM: 1:200 - 1:400

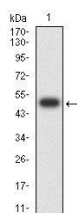
ELISA: 1:10000

Not yet tested in other applications.

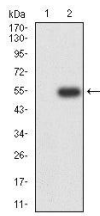
Images



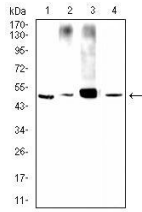
Black line: Control Antigen (100 ng);Purple line: Antigen (10ng); Blue line: Antigen (50 ng); Red line:Antigen (100 ng)



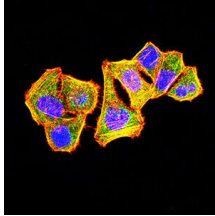
Western blot analysis using LAMP1 mAb against human LAMP1 (AA: 182-414) recombinant protein. (Expected MW is 50.4 kDa)



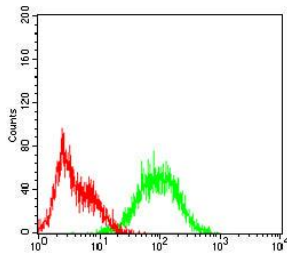
Western blot analysis using LAMP1 mAb against HEK293-6e (1) and LAMP1 (AA: 182-414)-hlgGFc transfected HEK293-6e (2) cell lysate.



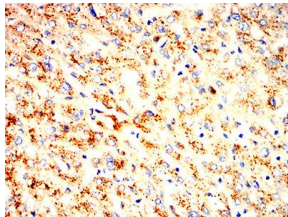
Western blot analysis using LAMP1 mouse mAb against HeLa (1), Ecv304 (2), A431 (3) and MCF-7 (4) cell lysate.



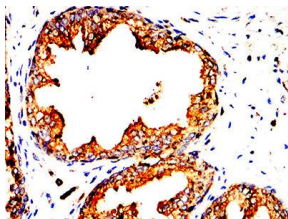
Immunofluorescence analysis of HeLa cells using LAMP1 mouse mAb (green). Blue: DRAQ5 fluorescent DNA dye. Red: Actin filaments have been labeled with Alexa Fluor-555 phalloidin. Secondary antibody from Fisher (Cat#: 35503)



Flow cytometric analysis of HeK293 cells using LAMP1 mouse mAb (green) and negative control (red).



Immunohistochemical analysis of paraffin-embedded liver tissues using LAMP1 mouse mAb with DAB staining.



Immunohistochemical analysis of paraffin-embedded prostatic cancer tissues using LAMP1 mouse mAb with DAB staining.

Storage

Store at 4°C short term. Aliquot and store at -20°C long term.

501 Changsheng S Rd, Nanhu Dist, Jiaxing, Zhejiang, China

Tel: 86 21 31007137 | E-mail: save@bt-laboratory.com | www.bt-laboratory.com