

KLHL12 Monoclonal Antibody

Description

Product type	Antibody
Code	BT-MCA3618
Host	Mouse
Isotype	Mouse IgG1
Size	100µL, 50µL
Immunogen	Purified recombinant fragment of human KLHL12 expressed in E. Coli.
Mol wt	63kDa
Species reactivity	Human
Clonality	Monoclonal
Recommended application	WB
Concentration	N/A
Full name	N/A
Synonyms	DKIR;C3IP1;FLJ27152;KLHL12

This product is for research use only, not for use in human, therapeutic or diagnostic procedure.

Background

Serves as a substrate-specific adapter for the CUL3-based ubiquitin-protein E3 ligase complex. Negatively regulates the Wnt signaling pathway via the targeted ubiquitination and subsequent proteolysis of DVL3. Tissue specificity: Highly expressed in testis and at lower levels in the submandibular salivary gland.

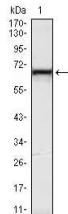
Recommended Dilution

WB: 1:500 - 1:2000

ELISA: 1:10000

Not yet tested in other applications.

Images



Western blot analysis using KLHL12 mouse mAb against HeLa (1) cell lysate.

Storage

Store at 4°C short term. Aliquot and store at -20°C long term.