

## ALDH2 Monoclonal Antibody

### Description

<b>Product type</b>	Antibody
<b>Code</b>	BT-MCA3686
<b>Host</b>	Mouse
<b>Isotype</b>	Mouse IgG1
<b>Size</b>	100 $\mu$ L, 50 $\mu$ L
<b>Immunogen</b>	Purified recombinant fragment of human ALDH2 (AA: 317-517) expressed in E. Coli.
<b>Mol wt</b>	56.3kDa
<b>Species reactivity</b>	Human,Mouse,Rat
<b>Clonality</b>	Monoclonal
<b>Recommended application</b>	WB,IHC,ICC,FCM
<b>Concentration</b>	N/A
<b>Full name</b>	N/A
<b>Synonyms</b>	ALDM;ALDHI;ALDH-E2

This product is for research use only, not for use in human, therapeutic or diagnostic procedure.

### Background

N/A

### Recommended Dilution

WB: 1:500 - 1:2000

IHC-p: 1:200 - 1:1000

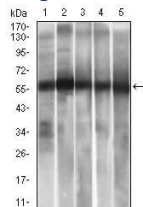
ICC: 1:150

FCM: 1:200 - 1:400

ELISA: 1:10000

Not yet tested in other applications.

### Images



Western blot analysis using ALDH2 mouse mAb against HepG2 (1), A549 (2) cell lysate and Rat liver (3), Mouse liver (4), Mouse brain (5) tissue lysate.

### Storage

Store at 4°C short term. Aliquot and store at -20°C long term.