

## AKR1C1 Monoclonal Antibody

### Description

<b>Product type</b>	Antibody
<b>Code</b>	BT-MCA3982
<b>Host</b>	Mouse
<b>Isotype</b>	Mouse IgG1
<b>Size</b>	100μL, 50μL
<b>Immunogen</b>	N/A
<b>Mol wt</b>	36.8kDa
<b>Species reactivity</b>	Human,Rabbit
<b>Clonality</b>	Monoclonal
<b>Recommended application</b>	WB,IHC,FCM
<b>Concentration</b>	N/A
<b>Full name</b>	N/A
<b>Synonyms</b>	C9;DD1;DDH;DDH1;H-37;HBAB;MBAB;HAKRC;DD1/DD2;2-ALPHA-HSD;20-ALPHA-HSD

This product is for research use only, not for use in human, therapeutic or diagnostic procedure.

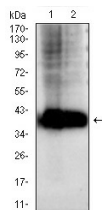
### Background

This gene encodes a member of the aldo/keto reductase superfamily, which consists of more than 40 known enzymes and proteins. These enzymes catalyze the conversion of aldehydes and ketones to their corresponding alcohols by utilizing NADH and/or NADPH as cofactors. The enzymes display overlapping but distinct substrate specificity. This enzyme catalyzes the reaction of progesterone to the inactive form 20-alpha-hydroxy-progesterone. This gene shares high sequence identity with three other gene members and is clustered with those three genes at chromosome 10p15-p14. [provided by RefSeq, Jul 2008]

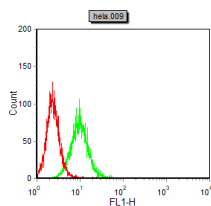
### Recommended Dilution

Not yet tested in other applications.

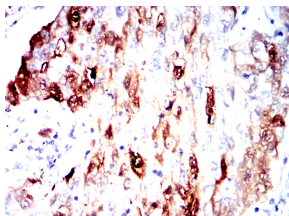
### Images



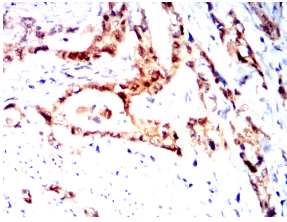
Western blot analysis using AKRAC1 mouse mAb against HeLa(1),HepG2(2)cell lysate.



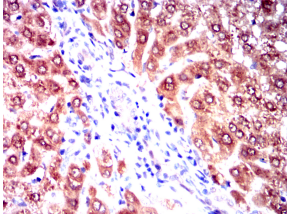
Flow cytometric analysis of HeLa cells using AKR1C1 mouse mAb (green) and negative control (red).



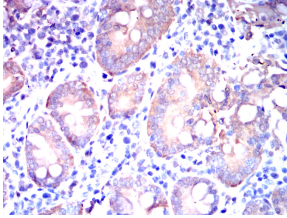
Immunohistochemical analysis of paraffin-embedded human lung cancer tissues using AKR1C1 mouse mAb with DAB staining.



Immunohistochemical analysis of paraffin-embedded human gastric cancer tissues using AKR1C1 mouse mAb with DAB staining.



Immunohistochemical analysis of paraffin-embedded rabbit liver tissues using AKR1C1 mouse mAb with DAB staining.



Immunohistochemical analysis of paraffin-embedded small intestine tissues using AKR1C1 mouse mAb with DAB staining.

### Storage

Store at 4°C short term. Aliquot and store at -20°C long term.

501 Changsheng S Rd, Nanhu Dist, Jiaxing, Zhejiang, China

Tel: 86 21 31007137 | E-mail: [save@bt-laboratory.com](mailto:save@bt-laboratory.com) | [www.bt-laboratory.com](http://www.bt-laboratory.com)