

## RHOA Monoclonal Antibody

### Description

<b>Product type</b>	Antibody
<b>Code</b>	BT-MCA4051
<b>Host</b>	Mouse
<b>Isotype</b>	Mouse IgG2b
<b>Size</b>	100µL, 50µL
<b>Immunogen</b>	Purified recombinant fragment of human RHOA (AA: 1-190) expressed in E. Coli.
<b>Mol wt</b>	22kDa
<b>Species reactivity</b>	Others
<b>Clonality</b>	Monoclonal
<b>Recommended application</b>	WB,IHC,ICC,FCM
<b>Concentration</b>	N/A
<b>Full name</b>	N/A
<b>Synonyms</b>	ARHA;ARH12;RHO12;EDFAOB;RHOH12

This product is for research use only, not for use in human, therapeutic or diagnostic procedure.

### Background

This gene encodes a member of the Rho family of small GTPases, which cycle between inactive GDP-bound and active GTP-bound states and function as molecular switches in signal transduction cascades. Rho proteins promote reorganization of the actin cytoskeleton and regulate cell shape, attachment, and motility. Overexpression of this gene is associated with tumor cell proliferation and metastasis. Multiple alternatively spliced variants have been identified. [provided by RefSeq, Sep 2015]

### Recommended Dilution

WB: 1:500 - 1:2000

IHC-p: 1:200 - 1:1000

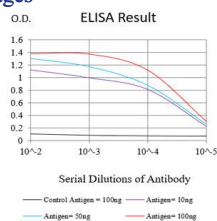
ICC: 1:200 - 1:1000

FCM: 1:200 - 1:400

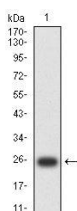
ELISA: 1:10000

Not yet tested in other applications.

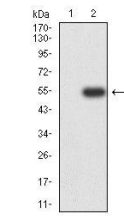
### Images



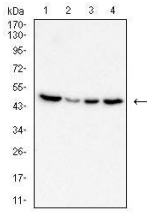
Black line: Control Antigen (100 ng);Purple line: Antigen (10ng); Blue line: Antigen (50 ng); Red line:Antigen (100 ng)



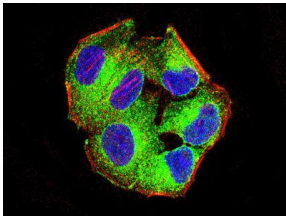
Western blot analysis using RHOA mAb against human RHOA (AA: 1-190) recombinant protein.



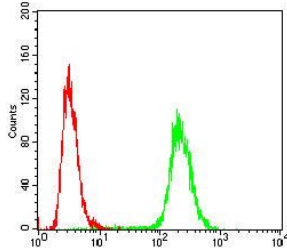
Western blot analysis using RHOA mAb against HEK293 (1) and RHOA (AA: 1-190)-hIgGFc transfected HEK293-6e (2) cell lysate.



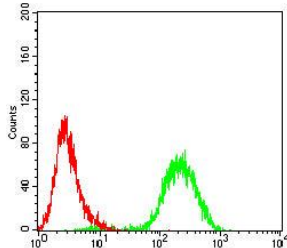
Western blot analysis using RHOA mouse mAb against Jurlat (1), MCF-7 (2), A431 (3), and HeLa (4) cell lysate.



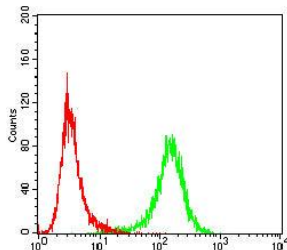
Immunofluorescence analysis of HeLa cells using RHOA mouse mAb (green). Blue: DRAQ5 fluorescent DNA dye. Red: Actin filaments have been labeled with Alexa Fluor-555 phalloidin. Secondary antibody from Fisher (Cat#: 35503)



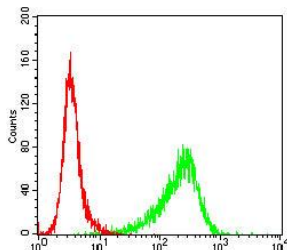
Flow cytometric analysis of HeLa cells using RHOA mouse mAb (green) and negative control (red).



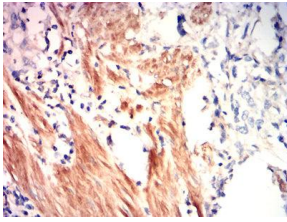
Flow cytometric analysis of HepG2 cells using RHOA mouse mAb (green) and negative control (red).



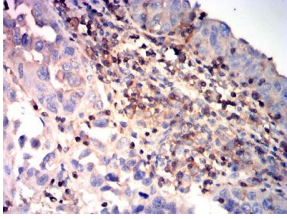
Flow cytometric analysis of Jurkat cells using RHOA mouse mAb (green) and negative control (red).



Flow cytometric analysis of K562 cells using RHOA mouse mAb (green) and negative control (red).



Immunohistochemical analysis of paraffin-embedded gastric cancer tissues using RHOA mouse mAb with DAB staining.



Immunohistochemical analysis of paraffin-embedded endometrial carcinoma tissues using RHOA mouse mAb with DAB staining.

### Storage

Store at 4°C short term. Aliquot and store at -20°C long term.

501 Changsheng S Rd, Nanhu Dist, Jiaxing, Zhejiang, China

Tel: 86 21 31007137 | E-mail: [save@bt-laboratory.com](mailto:save@bt-laboratory.com) | [www.bt-laboratory.com](http://www.bt-laboratory.com)