

ADAP1 Monoclonal Antibody

Description

Product type	Antibody
Code	BT-MCA4146
Host	Mouse
Isotype	Mouse IgG1
Size	100µL, 50µL
Immunogen	Purified recombinant fragment of human ADAP1 (AA: 240-370) expressed in E. Coli.
Mol wt	43.4kDa
Species reactivity	Human,Rat
Clonality	Monoclonal
Recommended application	WB,FCM
Concentration	N/A
Full name	N/A
Synonyms	GCS1L;CENTA1;P42ip4

This product is for research use only, not for use in human, therapeutic or diagnostic procedure.

Background

N/A

Recommended Dilution

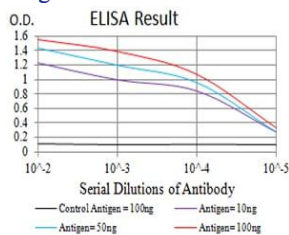
WB: 1:500 - 1:2000

FCM: 1:200 - 1:400

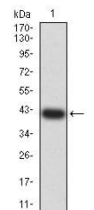
ELISA: 1:10000

Not yet tested in other applications.

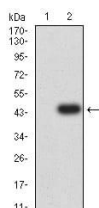
Images



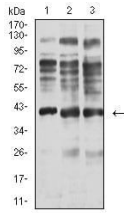
Black line: Control Antigen (100 ng);Purple line: Antigen (10ng); Blue line: Antigen (50 ng); Red line:Antigen (100 ng)



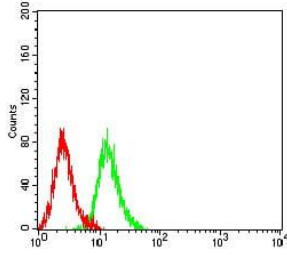
Western blot analysis using ADAP1 mAb against human ADAP1 (AA: 240-370) recombinant protein. (Expected MW is 41.6 kDa)



Western blot analysis using ADAP1 mAb against HEK293 (1) and ADAP1 (AA: 240-370)-hIgGfC transfected HEK293 (2) cell lysate.



Western blot analysis using ADAP1 mouse mAb against C6 (1), A549 (2), and HepG2 (3) cell lysate.



Flow cytometric analysis of K562 cells using ADAP1 mouse mAb (green) and negative control (red).

Storage

Store at 4°C short term. Aliquot and store at -20°C long term.

501 Changsheng S Rd, Nanhu Dist, Jiaxing, Zhejiang, China

Tel: 86 21 31007137 | E-mail: save@bt-laboratory.com | www.bt-laboratory.com