

## PSAP Monoclonal Antibody

### Description

<b>Product type</b>	Antibody
<b>Code</b>	BT-MCA4158
<b>Host</b>	Mouse
<b>Isotype</b>	Mouse IgG1
<b>Size</b>	100μL, 50μL
<b>Immunogen</b>	Purified recombinant fragment of human PSAP (AA: 17-216) expressed in E. Coli.
<b>Mol wt</b>	58.1kDa
<b>Species reactivity</b>	Others
<b>Clonality</b>	Monoclonal
<b>Recommended application</b>	WB,IHC
<b>Concentration</b>	N/A
<b>Full name</b>	N/A
<b>Synonyms</b>	GLBA;SAP1;SAP2

This product is for research use only, not for use in human, therapeutic or diagnostic procedure.

### Background

This gene encodes a highly conserved preproprotein that is proteolytically processed to generate four main cleavage products including saposins A, B, C, and D. Each domain of the precursor protein is approximately 80 amino acid residues long with nearly identical placement of cysteine residues and glycosylation sites. Saposins A-D localize primarily to the lysosomal compartment where they facilitate the catabolism of glycosphingolipids with short oligosaccharide groups. The precursor protein exists both as a secretory protein and as an integral membrane protein and has neurotrophic activities. Mutations in this gene have been associated with Gaucher disease and metachromatic leukodystrophy. Alternative splicing results in multiple transcript variants, at least one of which encodes an isoform that is proteolytically processed.

### Recommended Dilution

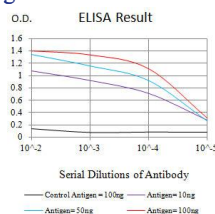
WB: 1:500 - 1:2000

IHC-p: 1:200-1:1000

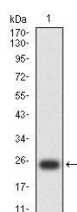
ELISA: 1:10000

Not yet tested in other applications.

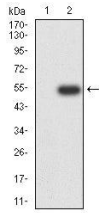
### Images



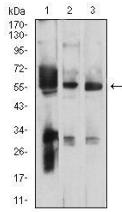
Black line: Control Antigen (100 ng);Purple line: Antigen (10ng); Blue line: Antigen (50 ng); Red line: Antigen (100 ng)



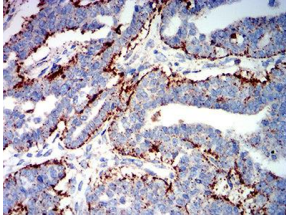
Western blot analysis using PSAP mAb against human PSAP (AA: 17-216) recombinant protein. (Expected MW is 24.9 kDa)



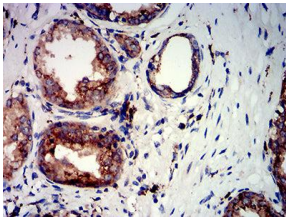
Western blot analysis using PSAP mAb against HEK293-6e (1) and PSAP (AA: 17-216)-hIgGFc transfected HEK293-6e (2) cell lysate.



Western blot analysis using PSAP mouse mAb against HEK293 (1), C6 (2), and HT1080 (3) cell lysate.



Immunohistochemical analysis of paraffin-embedded ovarian cancer tissues using PSAP mouse mAb with DAB staining.



Immunohistochemical analysis of paraffin-embedded prostate cancer tissues using PSAP mouse mAb with DAB staining.

### Storage

Store at 4°C short term. Aliquot and store at -20°C long term.

501 Changsheng S Rd, Nanhu Dist, Jiaxing, Zhejiang, China

Tel: 86 21 31007137 | E-mail: [save@bt-laboratory.com](mailto:save@bt-laboratory.com) | [www.bt-laboratory.com](http://www.bt-laboratory.com)