

## CD28 Monoclonal Antibody

### Description

<b>Product type</b>	Antibody
<b>Code</b>	BT-MCA4328
<b>Host</b>	Mouse
<b>Isotype</b>	Mouse IgG1
<b>Size</b>	100µL, 50µL
<b>Immunogen</b>	N/A
<b>Mol wt</b>	25kDa
<b>Species reactivity</b>	Human,Mouse,Rat,African Green Mouseonkey
<b>Clonality</b>	Monoclonal
<b>Recommended application</b>	FCM
<b>Concentration</b>	N/A
<b>Full name</b>	N/A
<b>Synonyms</b>	Tp44

This product is for research use only, not for use in human, therapeutic or diagnostic procedure.

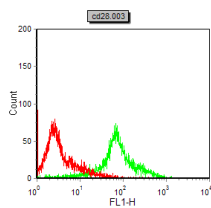
### Background

The protein encoded by this gene is essential for T-cell proliferation and survival, cytokine production, and T-helper type-2 development. Several alternatively spliced transcript variants encoding different isoforms have been found for this gene.[provided by RefSeq, Jul 2011]

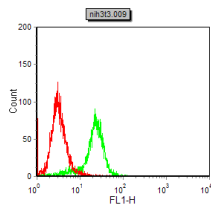
### Recommended Dilution

Not yet tested in other applications.

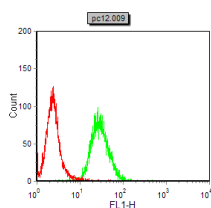
### Images



Flow cytometric analysis of PBMC cells using CD28 mouse mAb (green) and negative control (red).



Flow cytometric analysis of NIH3T3 cells using CD28 mouse mAb (green) and negative control (red).



Flow cytometric analysis of PC-12 cells using CD28 mouse mAb (green) and negative control (red).

## Storage

Store at 4°C short term. Aliquot and store at -20°C long term.

501 Changsheng S Rd, Nanhu Dist, Jiaxing, Zhejiang, China

Tel: 86 21 31007137 | E-mail: [save@bt-laboratory.com](mailto:save@bt-laboratory.com) | [www.bt-laboratory.com](http://www.bt-laboratory.com)