

IRF3 Monoclonal Antibody

Description

Product type	Antibody
Code	BT-MCA4838
Host	Mouse
Isotype	Mouse IgG2b
Size	100µL, 50µL
Immunogen	Purified recombinant fragment of human IRF3 (AA: 1-150) expressed in HEK293-6e cells supernatant.
Mol wt	47.2kDa
Species reactivity	Human,Mouse,Rat
Clonality	Monoclonal
Recommended application	IHC,ICC,FCM
Concentration	N/A
Full name	N/A
Synonyms	IIAE7

This product is for research use only, not for use in human, therapeutic or diagnostic procedure.

Background

N/A

Recommended Dilution

WB: 1:500 - 1:2000

IHC-p: 1:200 - 1:1000

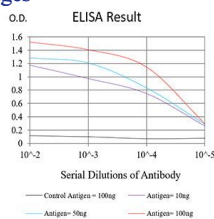
ICC: 1:200 - 1:1000

FCM: 1:200 - 1:400

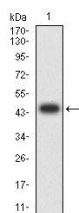
ELISA: 1:10000

Not yet tested in other applications.

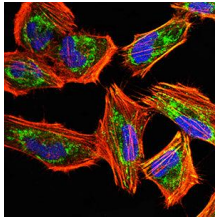
Images



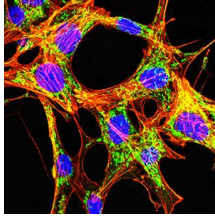
Black line: Control Antigen (100 ng);Purple line: Antigen (10ng); Blue line: Antigen (50 ng); Red line:Antigen (100 ng)



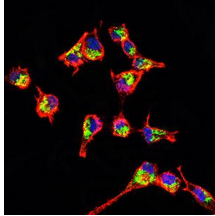
Western blot analysis using IRF3 mAb against human IRF3 (AA: 1-150) recombinant protein.
(Expected MW is 47.4 kDa)



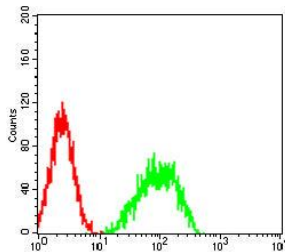
Immunofluorescence analysis of HeLa cells using IRF3 mouse mAb (green). Blue: DRAQ5 fluorescent DNA dye. Red: Actin filaments have been labeled with Alexa Fluor- 555 phalloidin. Secondary antibody from Fisher (Cat#: 35503)



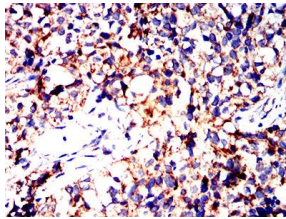
Immunofluorescence analysis of NIH/3T3 cells using IRF3 mouse mAb (green). Blue: DRAQ5 fluorescent DNA dye. Red: Actin filaments have been labeled with Alexa Fluor- 555 phalloidin. Secondary antibody from Fisher (Cat#: 35503)



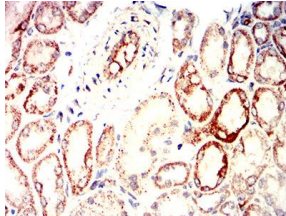
Immunofluorescence analysis of RSC96 cells using IRF3 mouse mAb (green). Blue: DRAQ5 fluorescent DNA dye. Red: Actin filaments have been labeled with Alexa Fluor- 555 phalloidin. Secondary antibody from Fisher (Cat#: 35503)



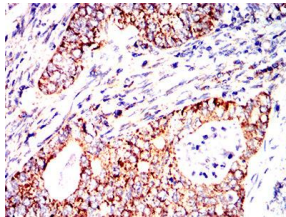
Flow cytometric analysis of HeLa cells using IRF3 mouse mAb (green) and negative control (red).



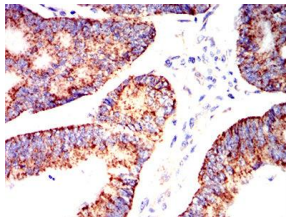
Immunohistochemical analysis of paraffin-embedded bladder cancer tissues using IRF3 mouse mAb with DAB staining.



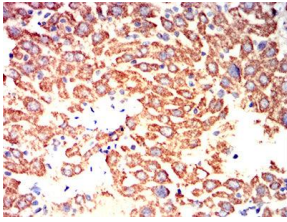
Immunohistochemical analysis of paraffin-embedded lung cancer tissues using IRF3 mouse mAb with DAB staining.



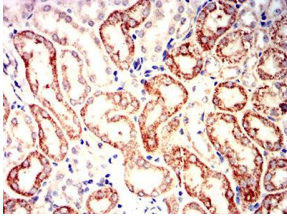
Immunohistochemical analysis of paraffin-embedded cervical cancer tissues using IRF3 mouse mAb with DAB staining.



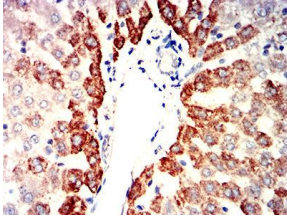
Immunohistochemical analysis of paraffin-embedded colon cancer tissues using IRF3 mouse mAb with DAB staining.



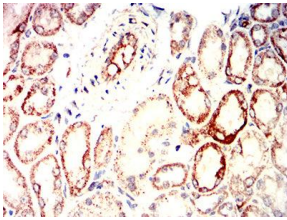
Immunohistochemical analysis of paraffin-embedded mouse liver tissues using IRF3 mouse mAb with DAB staining.



Immunohistochemical analysis of paraffin-embedded mouse kidney tissues using IRF3 mouse mAb with DAB staining.



Immunohistochemical analysis of paraffin-embedded rat liver tissues using IRF3 mouse mAb with DAB staining.



Immunohistochemical analysis of paraffin-embedded rat kidney tissues using IRF3 mouse mAb with DAB staining.

Storage

Store at 4°C short term. Aliquot and store at -20°C long term.

501 Changsheng S Rd, Nanhu Dist, Jiaxing, Zhejiang, China

Tel: 86 21 31007137 | E-mail: save@bt-laboratory.com | www.bt-laboratory.com