

beta-Actin Monoclonal Antibody

Description

Product type	Antibody
Code	BT-MCA4849
Host	Mouse
Isotype	Mouse IgG2b
Size	100µL, 50µL
Immunogen	Synthetic peptide corresponding to amino-terminal residues of human beta-Actin, conjugated to KLH.
Mol wt	42kDa
Species reactivity	Human,Mouse,Hamster,Rat,Monkey,Dog
Clonality	Monoclonal
Recommended application	WB,ICC,FCM
Concentration	N/A
Full name	N/A
Synonyms	PS1TP5BP1;ACTB

This product is for research use only, not for use in human, therapeutic or diagnostic procedure.

Background

Beta-actin (PS1TP5-binding protein 1), also known as ACTB, PS1TP5BP1. Entrez Protein NP_001092. It is one of six different actin proteins. Actin, a ubiquitous eukaryotic protein, is the major component of the cytoskeleton. Actins are highly conserved proteins that are involved in various types of cell motility, structure, and integrity. Actin is ubiquitously expressed in all eukaryotic cells. This actin is a major constituent of the contractile apparatus and one of the two nonmuscle cytoskeletal actins.

Recommended Dilution

WB: 1:500 - 1:2000

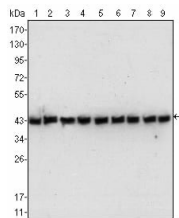
ICC: 1:200 - 1:1000

FCM: 1:200 - 1:400

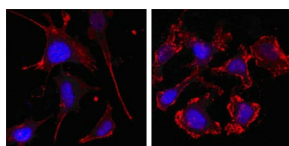
ELISA: 1:10000

Not yet tested in other applications.

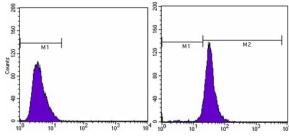
Images



Western blot analysis using beta-Actin mouse mAb against NIH/3T3 (1), Jurkat (2), HeLa (3), CHO (4), PC12 (5), HEK293 (6), COS (7), A549 (8) and MCF-7 (9) cell lysate.



Confocal Immunofluorescence analysis of SKBR-3 (left) and A549 (right) cells using beta Actin mouse mAb (red, the secondary Ab is Cy3-Goat anti mouse IgG). Blue: DRAQ5 fluorescent DNA dye.



Flow cytometric analysis of MCF-7 cells using beta Actin mouse mAb (right) and negative control (left).

Storage

Store at 4°C short term. Aliquot and store at -20°C long term.

501 Changsheng S Rd, Nanhu Dist, Jiaxing, Zhejiang, China

Tel: 86 21 31007137 | E-mail: save@bt-laboratory.com | www.bt-laboratory.com